

2023 AUSTRALASIAN AID CONFERENCE

PROGRAM



#AAC2023



FROM THE ORGANISING COMMITTEE

Welcome to the 2023 Australasian AID conference.

Thank you for joining the ninth AAC as we bring together the academic, policy and practitioner communities for the region's premier conference on aid and international development (AID).

We welcome speakers and delegates from across Australia, New Zealand, Asia and the Pacific and further afield to share insights on the world's most pressing development challenges in pursuit of enhanced collaboration, greater impact and better evidence-based policy.

We hope you enjoy the conference over the next few days. We look forward to hearing your ideas and advancing the conversation on the future of AID.

Stephen Howes

Director, Development Policy Centre

Cameron Hill

Senior Research Officer, Development Policy Centre

Vanessa Geidel

Program Officer, Development Policy Centre

Estelle Stambolie

Research Officer, Development Policy Centre

Amita Monterola

Research Communications Coordinator, Development Policy Centre

Anthea Mulakala

Senior Director, International Development Cooperation, The Asia Foundation

Peter Yates

Associate Director, Governance, The Asia Foundation

SPONSORS

The 2023 Australasian AID Conference is generously supported by



TABLE OF CONTENTS

General information	4
Crawford School maps	6
Program matrix	8
Tuesday 5 December	
Keynote address: Dr Alice Evans, 'Ten thousand years of patriarchy'	11
Pre-conference events	12
Wednesday 6 December Day One	
Morning	
Opening address: Fiji's Deputy Prime Minister Biman Prasad	14
Panels 1a-1f	14
Afternoon	
Panels 2a-2f	18
Keynote Panel: 'Australian aid effectiveness: where to from here?'	20
Panels 3a-3e	20
Dinner	
Keynote address: Laurel Miller, Asia Foundation	23
Thursday 7 December Day Two	
Morning	
Panels 4a-4f	24
Panels 5a-5f	28
Afternoon	
Panels 6a-6f	31
2023 Mitchell Oration: Dr Esperanza Martinez, 'Disentangling localisation: an imperative to uphold human dignity'	34
Keynote Panel: 'The gains and pains of working away from home: Pacific temporary migrant workers in Australia and New Zealand'	34
About us	35
Conference sponsors	36

The views expressed in AAC2023 conference materials or publications, and by speakers and chairs, do not necessarily reflect those of Development Policy Centre, The Asia Foundation, or the conference sponsors. Program content is correct at time of printing and may be subject to change.

GENERAL INFORMATION

COVID-19 GUIDELINES

Everyone has an important role to play in keeping our campus safe. The venue will be professionally cleaned throughout the day during business hours. Hand sanitiser will be available in all foyers and common areas to help maintain good hand hygiene.

Please do not attend the conference if you have any COVID-19 symptoms including fever, cough, sore throat, shortness of breath or difficulty breathing, or a runny or blocked nose.

Wearing of face masks within ANU venues is optional.

CONFERENCE VENUE

Crawford School of Public Policy
Australian National University
132 Lennox Crossing, Acton

DINNER VENUE

(ticketholders only)

National Museum of Australia
Lawson Crescent, Acton
(400 metres from the Crawford School)

Both venues are wheelchair accessible.

VENUE ACCESS

The best way to get to the Crawford School is by public transport transport.act.gov.au/home or on foot. There is limited paid parking available on campus.

Taxi and rideshare services

Wheelchair accessible taxis must be booked ahead. Phone 139 287, email bookings@13wats.com.au or online 13wats.com.au.

ACT Cabs

02 6280 0077 or actcabs.com.au/bookonline

Canberra Elite

02 6126 1600 or online booking.canberraelite.com.au/booking/

Silver Service

13 31 00 or

silverservicecanberra.com.au/book-online

Ola

ola.com.au

Uber

uber.com/global/en/cities/canberra/

A taxi from Canberra Airport to ANU campus takes around 20 minutes and will cost approximately \$30-\$40, depending on traffic.

Bus

Bus route 53 stops on Lennox Crossing in front of the Crawford School building.

transport.act.gov.au/getting-around/journey-planner

Light rail

The closest light rail stop is Alinga Street station, a 25-minute walk to the Crawford School building. transport.act.gov.au/getting-around/journey-planner

E-scooters

Beam ridebeam.com OR Neuron rideneuron.com. Road rules and conditions apply.

Parking

Very limited paid visitor parking is available on Lennox Crossing opposite the Crawford School building. Parking fees apply between 8am and 5pm Monday to Friday. Paid parking is also available at the National Museum of Australia, a 400 metre walk from the conference venue.

WIFI

Free wifi internet access is available for conference attendees.

Network: ANU-Secure OR ANU-Secure2

Username: DEVPOL2023

Password: AAC2023_ANU

DIETARY REQUIREMENTS

Vegan, vegetarian and gluten free options are all available in the main service area. For other special dietary requirements, please make yourself known to the catering staff.

QUIET SPACE

Seminar Room 9 has been set aside as a quiet space for attendees.

SPEAKER RETREAT

Seminar Room 8 can be used by speakers to prepare for their presentation.

MEETING ROOM

Seminar Room 7 is available for informal meetings.

LUGGAGE STORAGE

Seminar Room 2 is available for luggage storage. Please be advised that the room will not be locked, and the conference organisers will not take responsibility for lost or stolen items.

LOST PROPERTY

Lost property enquires are handled at the conference registration desk.

CONNECT WITH US

Stay up to date with Development Policy Centre research and events, join our mailing list devpolicy.org/join-us.

CONFERENCE APP

Download the free official Australasian AID Conference app Whova available on Apple or Android. Search for AAC2023.

Whova can be used to view the conference program, customise your conference schedule, network with other attendees, and receive last minute schedule updates or announcements.

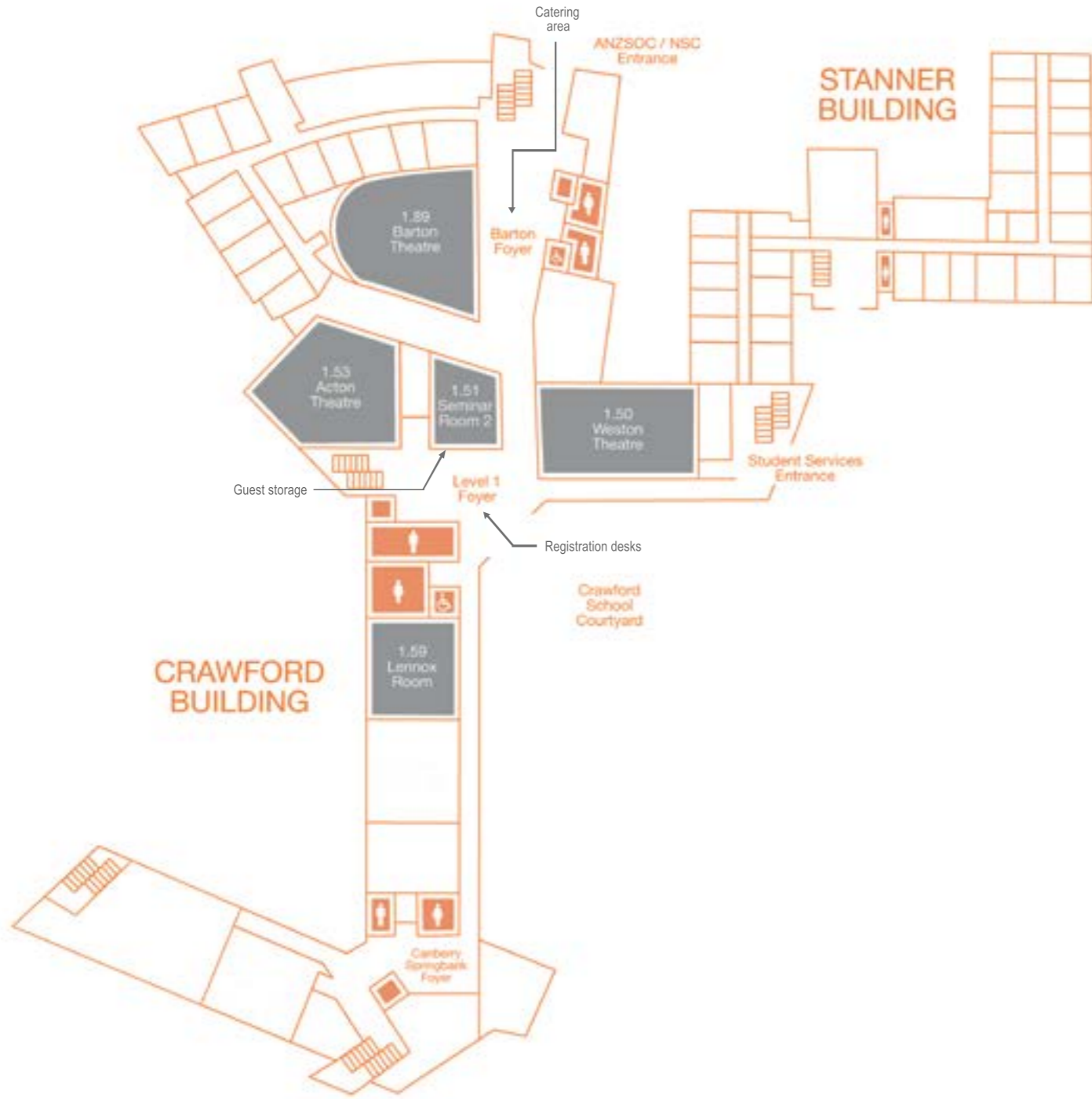
GET SOCIAL

Follow Development Policy Centre on X, Facebook and LinkedIn.

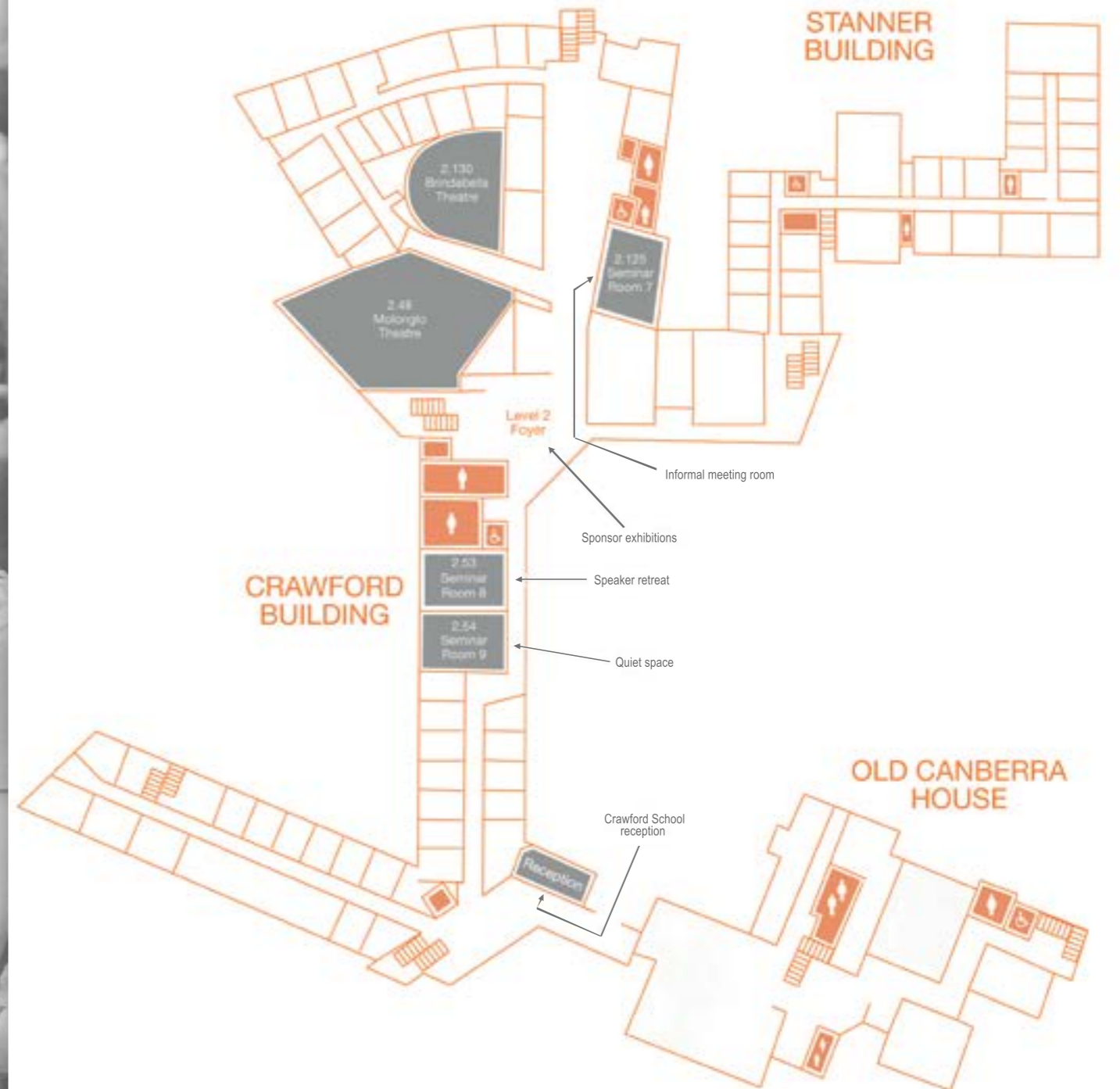
Subscribe to Devpolicy Talks podcast.



CRAWFORD MAP LEVEL 1



CRAWFORD MAP LEVEL 2



TUESDAY 5 DECEMBER | PRE-CONFERENCE EVENTS

1.00-2.00pm	Keynote address: 'Ten thousand years of patriarchy' Dr Alice Evans, Senior Lecturer, King's College London and author of 'The great gender divergence' (Princeton University Press, forthcoming) <i>Molonglo Theatre*</i>	
2.10-3.20pm	Book launch: 'Education reform and the learning crisis in developing countries' <i>Weston Theatre</i>	Book launch: 'State fragility: case studies and comparisons' <i>Barton Theatre</i>
3.20-3.50pm	Tea/coffee break	
3.50-5.00pm	Publication launch: 'What it takes to support local leaders to drive change' <i>Weston Theatre</i>	
5.00pm	Welcome to Country and opening reception <i>Crawford School courtyard</i>	

* Session will be livestreamed

WEDNESDAY 6 DECEMBER | DAY ONE

7.30am	Registration, tea and coffee <i>Barton Theatre foyer</i>	
8.10-8.30am	Conference introduction <i>Molonglo Theatre* [Overflow: Weston Theatre, Barton Theatre]</i>	
8.30-9.20am	OPENING ADDRESS Professor Biman Prasad, Deputy Prime Minister and Minister for Finance, Republic of Fiji <i>Molonglo Theatre* [Overflow: Weston Theatre, Barton Theatre]</i>	
9.20-9.30am	Short break	

9.30-11.00am	Panel 1a Good practice and emerging trends in locally led development <i>Molonglo Theatre*</i>	Panel 1b Unlocking Agenda 2030: strengthening disability data and making it accessible <i>Weston Theatre</i>	Panel 1c Impact evaluations of aid interventions in Australia's region <i>Barton Theatre</i>	Panel 1d Gender analytics: organisations, crises and aid performance <i>Acton Theatre</i>	Panel 1e Australian aid: purpose and partnerships <i>Brindabella Theatre</i>	Panel 1f Migration: diversity, debt and dividends <i>Lennox Room</i>
11.00-11.30am	Morning tea					
11.30-1.00pm	Panel 2a From below: the role of sub-national governance efforts in state building <i>Molonglo Theatre*</i>	Panel 2b Digital development: strategy, service delivery and information security <i>Weston Theatre</i>	Panel 2c Gender equality and inclusive development: finance, philanthropy and care <i>Barton Theatre</i>	Panel 2d New approaches to localisation and risk management <i>Acton Theatre</i>	Panel 2e Australian aid elites: inside the black box <i>Brindabella Theatre</i>	Panel 2f Private sector incentives for investing in climate action <i>Lennox Room</i>
1.00-2.00pm	Lunch					
2.00-3.00pm	KEYNOTE PANEL 'Australian aid effectiveness: where to from here?' <i>Molonglo Theatre* [Overflow: Weston Theatre, Barton Theatre]</i>					
3.00-3.30pm	Afternoon Tea					
3.30-5.00pm	Panel 3a Harnessing transformative gender action to influence national policy in Indonesia <i>Molonglo Theatre*</i>	Panel 3b Asian donors: China, India and Korea <i>Weston Theatre</i>	Panel 3c Using and scaling evidence: what works in global education <i>Barton Theatre</i>	Panel 3d Integrating local research into development programs: lessons from Asia and the Pacific <i>Acton Theatre</i>	Panel 3e Focus on Timor-Leste: economy, equality and development <i>Brindabella Theatre</i>	
5.00pm	Close					
5.45-6.30pm	Pre-dinner drinks (ticket holders only) <i>Forecourt, National Museum of Australia</i>					
6.30pm	Conference dinner (ticket holders only) Speaker: Laurel Miller, President and Chief Executive Officer, The Asia Foundation <i>Atrium, National Museum of Australia</i>					

*Session will be livestreamed

8.00am	Registration; tea and coffee Barton Theatre foyer					
8.30-10.00am	Panel 4a How can managing contractors contribute to localisation? Molonglo Theatre*	Panel 4b Feminist foreign policy and practical strategies for transforming systems of power Weston Theatre	Panel 4c Architectures of evidence: how development agencies deliver impact through knowledge, learning and research Barton Theatre	Panel 4d Pre-crisis response: anticipatory action in the Pacific and Timor-Leste Acton Theatre	Panel 4e Development in a rapidly ageing region Brindabella Theatre	Panel 4f Leaning in: why the Australian development sector is critical to high-integrity regional carbon markets Lennox Room
10.00-10.30am	Morning tea					
10.30am-12.00pm	Panel 5a First Nations' engagement in the new International Development Policy Molonglo Theatre*	Panel 5b Governance, fragility and conflict: building states, communities and peace Weston Theatre	Panel 5c Cash transfer and social protection programs: South and Southeast Asia and the Pacific Barton Theatre	Panel 5d Learning from DFAT's investment performance data Acton Theatre	Panel 5e The localisation agenda: decolonising and shifting power for an equitable future Brindabella Theatre	Panel 5f Climate change: regional and donor perspectives Lennox Room
12.00-1.00pm	Lunch					
1.00-2.30pm	Panel 6a Transforming the regional care economy: policy, delivery and justice Molonglo Theatre*	Panel 6b Realising the double dividend: gender and climate change Weston Theatre	Panel 6c International NGOs: leadership, effectiveness and trends Barton Theatre	Panel 6d Civic peacebuilding, regional stability, and "Indo-Pacific" pivots Acton Theatre	Panel 6e Locally-led development: insights from humanitarian, development and climate programs Brindabella Theatre	Panel 6f Evaluations and effectiveness: from analysis to action Lennox Room
2.30-3.00pm	Afternoon tea					
3.00-4.00pm	2023 MITCHELL ORATION 'Disentangling localisation: an imperative to uphold human dignity' Dr Esperanza Martinez, Head, Health and Human Security, College of Health and Medicine, Australian National University Molonglo Theatre* [Overflow: Weston Theatre, Barton Theatre]					
4.10-5.00pm	KEYNOTE PANEL 'The gains and pains of working away from home: Pacific temporary migrant workers in Australia and New Zealand' Molonglo Theatre* [Overflow: Weston Theatre, Barton Theatre]					
5.10pm	Closing Reception Crawford School courtyard					

*Session will be livestreamed

TUESDAY 5 DECEMBER PRE-CONFERENCE EVENTS

1.00PM

KEYNOTE ADDRESS [online]

Molonglo Theatre*

'Ten thousand years of patriarchy'

Dr Alice Evans, Senior Lecturer at King's College London, Visiting Professor, Munk School of Global Affairs and Public Policy, University of Toronto and author of 'The Great Gender Divergence' (Princeton University Press, forthcoming)

Dr Evans will explain how the entire world has become more gender equal, and why some countries are more gender equal than others.

Chair: Stephanie Copus Campbell, Australian Ambassador for Gender Equality, Department of Foreign Affairs and Trade

*Session will be livestreamed



Australian Government

Australian Centre for
International Agricultural Research

THE AUSTRALIAN GOVERNMENT'S AGRICULTURAL RESEARCH-FOR-DEVELOPMENT AGENCY

ACIAR brokers, facilitates, invests in and manages strategic partnerships with public and private research institutions to improve the productivity and sustainability of agricultural systems and the resilience of food systems in partner countries.

Our work supports 6 crucial development objectives

- 1 Improving food security and reducing poverty among smallholder farmers and rural communities
- 2 Managing natural resources and producing food more sustainably, adapting to climate variability and mitigating climate change
- 3 Enhancing human nutrition and reducing risks to human health
- 4 Improving gender equity and empowerment of women and girls
- 5 Fostering more inclusive agrifood and forestry value chains, engaging the private sector where possible
- 6 Building scientific and policy capability within our partner countries



TUESDAY 5 DECEMBER | PRE-CONFERENCE

2.10PM

Book launch – ‘Education reform and the learning crisis in developing countries’

Weston Theatre

‘Education Reform and the Learning Crisis in Developing Countries’ (Cambridge University Press, 2022) provides an empirical and personal/analytical look at why donor institutions have not succeeded sufficiently in improving learning in low and middle-income countries over the last 30 years. The book begins by briefly tracing the learning crisis through global compacts agreed to over the years and the concerted focus on measuring student learning. This is followed by a review of the common interventions financed by donors that have not succeeded in mitigating the crisis.

Chair: Professor Stephen Howes, Director, Development Policy Centre, Australian National University

Author: Dr Prema Clarke, Independent consultant

Book launch – ‘State fragility: case studies and comparisons’

Barton Theatre

Presenting case studies and comparisons across seven countries, ‘State Fragility: Case Studies and Comparisons’ (Routledge, 2023) addresses key questions as to the nature of state fragility, the policies used to mitigate it, and an assessment of outcomes and prospects.

Examining Afghanistan, Lebanon, Burundi, Pakistan, Sierra Leone, Papua New Guinea and Rwanda within the context of their different local circumstances, and within broader questions of global security, the book identifies unique factors that have played a part in their specific context and explores key drivers and dominant features of state fragility.

Chair: Emeritus Professor William Maley, Coral Bell School of Asia Pacific Affairs, Australian National University

Editor: Dr Nematullah Bizhan, Lecturer, Development Policy Centre, Australian National University

Discussant: Professor Paul Collier, Blavatnik School of Government, Oxford University

12 | AAC2023

3.20PM AFTERNOON TEA

3.50PM

Publication launch – ‘What it takes to support local leaders to drive change’

Weston Theatre

Supporting local leaders to pursue developmental change has become an increasingly accepted tenet of good aid practice and is at the core of Australia’s new International Development Policy.

This workshop will launch the findings of the Developmental Leadership Program’s final synthesis report, ‘Navigating everyday leadership: spaces of contestation in the Indo-Pacific’.

This synthesis argues that to fully appreciate the power of leadership, we need to view it through an everyday lens.

The people in this story are not ‘leaders’ in the typical Westernised sense, rather they are the everyday agents of change who drive it through the political process of contesting ideas and forging relationships. This report seeks to bring the voices of these agents to the foreground.

Chair: Nicola Nixon, Senior Director, Governance, The Asia Foundation

Panelists:

Mereani Rokotuibau, Executive Director, Balance of Power

Chris Roche, Professor of Development Practice, La Trobe University

Associate Professor Tanya Jakimow, School of History, Culture and Language, Australian National University

Fremden Yanhambath, Director, Vanuatu Skills Partnership



5.00PM

Welcome to Country and opening reception

Serena Williams, Ngunnawal-Wiradjuri woman, Ngunnawal elder

Crawford School courtyard



ABC INTERNATIONAL DEVELOPMENT

- 21 countries**
ABCID has worked in 21 countries across the Indo-Pacific region.
- 50M people**
ABCID has supported media and other partners to reach more than 50 million people.
- 80 years**
The ABC has been Australia’s trusted voice internationally for more than 80 years.

ABOUT US
ABC International Development (ABCID) is part of the Indo-Pacific media community with specialist media development and communications expertise, knowledge and relationships across Australia and the region. ABCID draws on the ABC’s institutional expertise.

We support, connect and empower communities through fostering inclusive media, public interest journalism, behaviour change communications and research. Regional resilience is being profoundly challenged and media development matters more than ever.

COME WORK WITH US! WWW.ABCINTERNATIONALDEVELOPMENT.NET.AU

WEDNESDAY 6 DECEMBER | DAY ONE

7.30AM REGISTRATION

8.10AM

Conference introduction

*Molonglo Theatre**

[Overflow: Weston Theatre, Barton Theatre]

Welcome

Dr Cameron Hill, Senior Researcher, Development Policy Centre, Australian National University

Opening remarks

Laurel Miller, President and Chief Executive Officer, The Asia Foundation

8.30AM

OPENING ADDRESS

*Molonglo Theatre**

[Overflow: Weston Theatre, Barton Theatre]

The Hon Professor Biman Prasad, Deputy Prime Minister and Minister for Finance, Republic of Fiji

Chair: Professor Helen Sullivan, Dean, College of Asia and the Pacific, Australian National University



9.30AM

Panel 1a – Good practice and emerging trends in locally-led development

*Molonglo Theatre**

This panel will explore the topic of locally led development, sharing what DFAT is learning both internally from its own portfolio and lessons from other OECD donors. It will cover the taxonomy of locally led development and localisation, introduce a spectrum of emerging to advanced localisation approaches and highlight some key features of our new locally led development guidance, including flexible financing, and key measures of progress.

Case studies from DFAT's portfolio will be used to highlight good practice: the Building Community Engagement Program in Papua New Guinea and the SKALA and INKLUSI programs in Indonesia.

Chair: Andrew Egan, Acting First Assistant Secretary, Development Effectiveness and Enabling Division, Department of Foreign Affairs and Trade

Panelists:

Doreen Iga, Team Leader, Building Community Engagement Program, Papua New Guinea

Petrarca Karetji, Team Leader, SKALA, Indonesia

Ramot Aritonang, Senior Program Manager, Australian Embassy, Jakarta

Kirsten Hawke, Lead Design Specialist, Development Performance and Advisory Services Branch, Department of Foreign Affairs and Trade

*Session will be livestreamed

> More panels in this session on following page

See the world from a different viewpoint

Foreign and Security Policy	Energy Policy
Cybersecurity	Rule of Law
Terrorism / Counter-Terrorism	Development Policy

periscopekasaustralia.com.au

Looking for the **intersections**.

Prioritising **equity**.

Driving real-world **impact**.

abtassociates.com.au

Panel 1b – Unlocking Agenda 2030: strengthening disability data and making it accessible

Weston Theatre

Uncounted too often means unseen and ignored. At the halfway mark, people with disabilities are the group left farthest behind in progress made so far toward Agenda 2030. Data marginalisation of people with disabilities has been well established in the literature.

One way to address this marginalisation is citizen generated data -both qualitative and quantitative -to fill data gaps and complement official data sources, particularly in the monitoring of the Sustainable Development Goals and the UN Convention on the Rights of Persons with Disabilities. People with disabilities are best placed to provide important context through their lived experience and it enables them to monitor, advocate and drive change that effects their constituents. The session will present research and initiatives related to citizen-generated data and its use from the community to national and international levels.

Chair: Conor Costello, Head of Policy and Advocacy, CBM Australia

Panelists:

Setareki Macanawai, Chief Executive Officer, Pacific Disability Forum

Hercules Paradiang, Country Director, CBM Philippines

Professor Sophie Mitra, Principal Investigator of the Disability Data Initiative, Fordham University [online]

Associate Professor Michael Palmer, Research Coordinator of the Asia and Pacific Hub of the Disability Data Initiative, University of Western Australia [online]

Panel 1c – Impact evaluations of aid interventions in Australia’s region

Barton Theatre

This panel will highlight three ongoing studies which demonstrate the opportunities and also some of the challenges associated with rigorous impact evaluation of development programs.

First, we highlight a stream of work aligned with the World Bank to evaluate active labour market programs in Papua New Guinea. Second, we report on one of the first attempts to evaluate the causal impacts of Development Finance Institution funding, focusing on power plants. Third, as part of the Asian Development Bank’s private sector development work in the Pacific, we report on the baseline results of an impact evaluation of a national reform based on a survey of 2,400 enterprises in Fiji in 2023.

Chair: Professor Shyamal Chowdhury, School of Economics, University of Sydney

Panelists:

Dr Russell Toth, Senior Lecturer, School of Economics, University of Sydney

Dr Darian Naidoo, Economist, World Bank

Aalya Sukkarieh, Analyst, Equity Economics [online]

Panel 1d – Gender analytics: organisations, crises and aid performance

Acton Theatre

Propelling gender equality and social justice from the inside-out: organisational gender equality self-assessment

Sopheap Suong, Gender Equality and Inclusion Specialist, Save the Children International, Cambodia

Australian aid for women’s empowerment: where does it go and how well does it work?

Dr Terence Wood, Research Fellow, Development Policy Centre, Australian National University

From analysis to action: the role of rapid gender analysis in crises

Dr Athena Nguyen, Senior Manager Capability and Impact, CARE Australia

Chair: Dr Sonia Palmieri, Associate Professor and Head, Department of Pacific Affairs, Australian National University

Panel 1e – Australian aid: purpose and partnerships

Brindabella Theatre

Regional perspectives on Australia as a development partner: findings from Indonesia, Philippines, and Myanmar

Madeleine Flint, Senior Analyst, Development Intelligence Lab

Media development as the lifeblood to achieving Australia’s aid and development goals

Dr Prashanth Pillay, Manager, Research and Evaluation, Australian Broadcasting Corporation (International Development)

Kathryn Seymour, Project Director, Australian Broadcasting Corporation

Australia-France development coordination in the Pacific

Heather Wrathall, Program Lead -Pacific, Asia-Pacific Development, Diplomacy and Defence Dialogue

Anna Gibert, Strategic Advisor, Vanuatu Skills Partnership

Transactional or transformational? Navigating the competing purposes of Australia’s aid program

Heather Murphy, Senior Analyst, Development Intelligence Lab

Chair: Ken Xie, Assistant Director, Development Policy Section, Department of Foreign Affairs and Trade



Panel 1f – Migration: diversity, debt and dividends

Lennox Room

A very beautiful but heavy jacket: experiences of LGBTIQ+ migrant workers in Southeast Asia and implications for LGBTIQ+ inclusive development policy

Emily Dwyer, Chief Executive Officer, Edge Effect

Do remittances increase household indebtedness? Evidence from a Cambodian household survey

Dr Oum Chan Mono, Senior Researcher, Cambodia Development Center

Living and working in two worlds: a personal reflection on aged care support worker migration in regional Australia

Akeniti Tearau, Aged Care Support Worker, Highfields Manor, Port Macquarie, Australia (with Anthony Bailey, MEL Lead, Kiribati-Australia Skills for Employment Partnership)

Chair: Professor Alan Gamlen, Director, Migration Hub, School of Regulation and Global Governance, Australian National University

11.00AM MORNING TEA



Panel 2a – From below: the role of sub-national governance efforts in state building

*Molonglo Theatre**

Building effective and accountable states has been placed at the heart of Australia's new International Development Policy as one of four pillars of focus. This panel explores the way in which these objectives are pursued at the sub-national level through programming on decentralisation, federalism and local level service delivery. It will draw on newly released research on the state of subnational governance in the region, and explore innovative programming responses that are in place to better understand how the critical role of subnational governance can be prioritised to support the building of effective and accountable states.

While Australia and other donors have long invested in subnational programming, significant shifts have occurred over the last five years, as subnational governments became critical during the COVID-19 pandemic and as political sensitivities have seen a re-prioritisation away from national level investments in some contexts. The panel will provide insight into the current state of subnational governance across the region and how to effectively assist this critical arena of development.

Chair: Peter Yates, Associate Director, The Asia Foundation, Local Public Sector Alliance-Advisory Board Member

Panelists:

Anna Winoto, Country Representative and Strategic Advisor, Abt Associates

Bishnu Adhikari, Nepal Governance Director, The Asia Foundation

Dr Anouk Ride, Research Fellow, College of Asia and the Pacific, Australian National University

Panel 2b – Digital development: strategy, service delivery and information security

Weston Theatre

Applying mixed methods research to encourage help seeking among survivors of gender based violence in Indonesia

Caitlin Court, Senior Advisor, Behavioural Insights Team

Nihandini Santi, Technical Officer, Peace and Justice, UNDP Indonesia [online]

Rethinking development through digital transformation: strategies for success

David Roach, Director and Co-Founder, Catalpa International

Information security in the development sector

Anastasia Kapetas, Program Lead, Asia-Pacific Development, Diplomacy and Defence Dialogue

Chair: Heather Wrathall, Program Lead-Pacific, Asia-Pacific Development, Diplomacy and Defence Dialogue

Panel 2c – Gender equality and inclusive development: finance, philanthropy and care

Barton Theatre

Shifting the power dynamics: understanding challenges and opportunities to build women's financial resilience

Dr Sara Niner, Senior Lecturer, Monash University

Shifting Power - equity in the philanthropic sector

Yifat Susskind, Executive Director, MADRE [online]

Government policy and aid interventions around the care economy: a case study of Vietnam, the Philippines and Indonesia

Dr Betty Barkha, Research Coordinator - Investing in Women [online]

Dr Elise Stephenson, Deputy Director, The Global Institute for Women's Leadership, Australian National University [online]

Chair: Bettina Baldeschi, Chief Executive Officer, International Women's Development Agency

Panel 2d – New approaches to localisation and risk management

Acton Theatre

Beyond avoidance: AIFFP's journey to strengthen environmental and social safeguards in Pacific Infrastructure

Joanna Buldeski, Practice Lead - Impact and Safeguards, Asia Pacific, DT Global

Kate Thelander, Assistant Director, Environmental and Social Safeguards, Australian Infrastructure Financing Facility for the Pacific, Department of Foreign Affairs and Trade

Levelling the playing field: integrating budget training into the project application process. A case study from the Canada Fund for Local Initiatives.

Manon Dumas, Deputy High Commissioner of Canada to Australia

Alexandra Croyle, Manager, Canada Fund for Local Initiatives

Time for change: fiduciary and integrity risk in locally-led development

Oliver May, Partner, Deloitte

A locally-led development approach in a climate-resilient WASH project in Indonesia

Wahyu Triwahyudi, Senior Advisor WASH, Plan International Australia

Chair: Jocelyn Condon, Chief Operating Officer, Australian Council for International Development

Panel 2e – Australian aid elites: inside the black box

Brindabella Theatre

The (even more) cautious consensus on aid: updated reflections from Australian parliamentarians

Dr Tamas Wells, Research Fellow, University of Melbourne

What Canberra policymakers really think

Bridi Rice, Chief Executive Officer, Development Intelligence Lab

The political economy of research uptake at DFAT: bureaucratic perceptions, institutional imperatives, intrinsic biases, and individual motivations

Ujjwal Krishna, PhD Candidate, Institute for Human Security and Social Change, La Trobe University

Chair: Dr Cameron Hill, Senior Researcher, Development Policy Centre, Australian National University

Panel 2f – Private sector incentives for investing in climate action

Lennox Room

As the realities of a changing climate have become more evident, commitment to finding solutions has grown. Climate change is likely to be the most significant economic disruptor of the next 30 years as economies seek to rapidly decarbonise, while also being increasingly exposed to shifts in weather patterns. Aid investment can stimulate private sector activity and innovation in climate change adaptation and mitigation by de-risking investment and accelerating uptake of climate change solutions.

This panel will discuss ways in which Australia's Market Development Facility has worked with local entrepreneurs to leverage private sector incentives and innovation, to take advantage of opportunities to support climate change adaptation and mitigation outcomes for their businesses and communities. The audience will hear directly from two entrepreneurs from the Pacific and Timor-Leste on their experience of adapting businesses to the emerging realities of climate change.

Chair: Natalie Mckelleher, Assistant Director, Agriculture and Food Security Section, Department of Foreign Affairs and Trade

Panelists:

Angus Towart, Climate Change Manager, Market Development Facility

Yogesh Chand, Director – Solar Hub, New Zealand and Fiji

Mariano Da Costa Alves, Director, Mara Mresa Café Lda, Timor-Leste

* Session will be livestreamed

2.00PM

KEYNOTE PANEL

*Molonglo Theatre**

[Overflow: Weston Theatre and Barton Theatre]

‘Australian aid effectiveness: where to from here?’

This panel will discuss ways to improve Australian aid effectiveness, in light of the new government’s International Development Policy and performance framework, international best practice, and recent developments in the Australian Government.

The discussion will survey the evolution of the Australian aid program’s approach to evaluation, including under the former Office of Development Effectiveness and Independent Evaluation Committee. It will move to an assessment of international development evaluation work across education, youth, and gender equality programs, highlighting global best practices and how rigorous evaluation and learning can be embedded in implementing organisations.

The panel will also discuss the establishment of the new Australian Centre for Evaluation within the Treasury, the role of experimental evaluations in improving effectiveness, and opportunities for Australia’s aid program.

Chair: Dr Jenny Gordon, Nonresident Fellow, Lowy Institute and Honorary Professor at the Centre for Social Research and Methods, Australian National University

Panelists:

The Hon Dr Andrew Leigh, Assistant Minister for Competition, Charities and Treasury and Assistant Minister for Employment, Australian Government

Dr Claire Cullen, Postdoctoral Research Fellow, Blavatnik School of Government, Oxford University and Head of Research, Youth Impact

Professor Stephen Howes, Director, Development Policy Centre, Australian National University

3.00PM AFTERNOON TEA

** Session will be livestreamed*

3.30PM

Panel 3a – Harnessing transformative gender action to influence national policy in Indonesia

*Molonglo Theatre**

This panel explores how Indonesian feminist and women’s civil society organisations have used collective action to take transformative gender action in the creation of Indonesia’s national medium- and long-term development strategies.

The inaugural National Women’s Development Consultation (Musyawarah Perempuan) in 2023 provided a unique opportunity for women and Civil Society Organisations across Indonesia to influence development of the two strategies and to share grassroots initiatives that promote gender equality and social inclusion. For many women involved with Musyawarah Perempuan, it was their first experience in contributing to a national policy making process.

Chair: Dr Endah Trista Agustiana, Senior GEDSI Advisor, Australia-Indonesia Partnership Towards an Inclusive Society (INKLUSI)

Panelists:

Qurrota A’yun, Acting Director for Family, Women, Children, Youth and Sports, Ministry of National Development Planning (BAPPENAS), Indonesia

Lenny Rosalin, Deputy for Gender Equality, Ministry of Women’s Empowerment and Child Protection, Indonesia

Misiyah, Chair of the Executive Board, KAPAL Perempuan, Indonesia

Panel 3b - Asian donors: China, India and Korea

Weston Theatre

Coloniality and decoloniality in Korean aid and development

Dr Jae-Eun Noh, Research Fellow, Australian Catholic University [online]

“Complementary convergence”: the case of Belt and Road Initiative, and Sustainable Development Goals integration

Hannah McNicol, Cookson Scholar and joint PhD Candidate, University of Melbourne and University of Manchester

Pen, politics and power: how China and India wield soft power through education diplomacy in South Asia

Saumitra Neupane, Executive Director, Policy Entrepreneurs Inc.

Chair: Michael Wilson, Group Chief Executive, eWater Limited

Panel 3c – Using and scaling evidence: what works in global education

Barton Theatre

The world faces a persistent challenge of low and stagnant learning levels despite remarkable progress in increasing school enrolment. This panel brings together education researchers and implementers to explore evidence-backed programs and strategies that drive impactful change and improve learning.

The panel presentations will highlight the critical role of quality implementation in maximising program impact and scalability. They will also share insights on how governments and implementers can draw on evidence on cost-effective programs from around the world to improve learning outcomes and address the global learning crisis.

Chair: Rob Christie, Assistant Secretary, Development Finance and Economics Branch, Department of Foreign Affairs and Trade

Panelists:

Dr Rachael Meager, Associate Professor of Economics, University of New South Wales

Dr Noam Angrist, Academic Director, What Works Hub for Global Education, Oxford University [online]

Rene Marlon Panti, Research Manager, Philippines Socioeconomic Panel Survey, Innovations for Poverty Action

Panel 3d – Integrating local research into development programs: lessons from Asia and the Pacific

Acton Theatre

This panel will critically explore the opportunities and consequences of integrating research into development programs from the initial design phase. The panel will bring together local researchers from three different development programs currently being implemented across the Pacific and Asia – namely, Balance of Power, Investing in Women and The Asia Foundation, Pacific.

The panelists will discuss the use of research as an intentional strategy to broker new partnerships (including with non-usual suspects), identify alternative programmatic entry points, and build a range of research-relevant skills. In each program, research is, and will be undertaken as more than just a mechanism by which to ‘produce knowledge’. While there are clear benefits to this approach in terms of development outcomes, not least of which is a stronger cohort of local researchers able to gather valuable, robust evidence to inform policy solutions, there are also unintended consequences.

Chair: Julianne Cowley, Assistant Secretary, Pacific Development Branch, Department of Foreign Affairs and Trade

Panelists:

Vani Nailumu, Research Coordinator, Balance of Power

Kim Patria, Director for Campaigns and Communities of Practice, Investing in Women

Lavenia Rokovucago, Senior Program Officer (Pacific), The Asia Foundation

> More panels in this session on following page

** Session will be livestreamed*



3.30PM

Panel 3e – Focus on Timor-Leste: economy, equality and development

Brindabella Theatre

An internationally engaged Timor-Leste economy? Past, present and future

Professor Brett Inder, Monash University

‘This is our right’: social protection and fairness in Timor-Leste

Dr Kate Pruce, Institute of Development Studies, UK

Institutional challenges for economic diversification and implications for development partnership

Guteriano Neves, PROVISU

Chair: Philippa Venning, Vice President, Program Quality and Strategy, Abt Associates

5.00PM CLOSE

5.45PM

Pre-dinner drinks

(Ticket Holders Only)

Forecourt, National Museum of Australia

6.30PM

Conference dinner

(Ticket Holders Only)

Atrium, National Museum of Australia



Speaker: **Laurel Miller**, President and Chief Executive Officer, The Asia Foundation



National Museum of Australia

THURSDAY 7 DECEMBER | DAY TWO

8.00AM REGISTRATION

8.30AM

Panel 4a – How can managing contractors contribute to localisation?

*Molonglo Theatre**

Aid and development have rightly come under fire for perpetuating systematic power imbalances, exposing both racial and gendered fault lines within the architecture of international development. Australia's new International Development Policy highlights the priority to support local leadership, solutions and accountability, including by channeling funding to local actors. But the question remains: to what extent can aid practices be transformed better to serve local communities?

Donors have a direct interest in retaining some degree of power and authority over the use of resources – it is, after all, their taxpayers' money. But it is not only donors that have interests and incentives: managing contractors have them too. While donors remain the main clients for managing contractors, the contracts they sign and the commitments they make influence, if not determine, their organisational behaviour. They also reduce the incentives to reduce their own control. The barriers to effective localisation may be inherent in the overall development system, rather than in any malevolence on behalf of 'northern' actors.

Chair: Dr Henry Ivarature, Deputy Director, Australia Pacific Security College, Australian National University

Panelists:

Graham Teskey, Global Lead for Governance, Abt Associates

Farheen Khurram, Director, International Programs, Palladium

Joanne Choe, Head of Program Quality and Gender, DT Global

Panel 4b – Feminist foreign policy and practical strategies for transforming systems of power

Weston Theatre

This session will explore practical strategies for transforming the power structures associated with patriarchy, colonialism and capitalism through presentations by authors of the Australian Feminist Foreign Policy Coalition's Issues Paper Series, a bi-monthly publication exploring opportunities and challenges of implementing a feminist foreign policy.

The discussion will include an exploration of the themes of a First Nations Foreign Policy in depth, discussing how Australian government should engage First Nations communities in implementation of this commitment, as well as the interconnections between feminist and First Nations approaches. It will also explore the idea of a feminist economy of wellbeing and how such an economy might be measured. And it will highlight the importance of a feminist approach to DFAT's new International Gender Strategy and to operationalising Australia's commitment to addressing unequal power structures in its development approaches and programs.

Chair: Jo Crawford, Strategic Advisor, Equality Insights, International Women's Development Agency

Panelists:

Dr James Blackwell, Research Fellow in Indigenous Diplomacy, Australian National University

Professor Naila Kabeer, London School of Economics and Political Science [online]

Dr Annabel Dulhunty, Lecturer, Crawford School of Public Policy, Australian National University

Panel 4c – Architectures of evidence: how development agencies deliver impact through knowledge, learning and research

Barton Theatre

This session includes a diversity of panelists who will represent a variety of perspectives and practical examples of how organisations create cultures of learning and use evaluation and research.

The panelists will reflect on what can be done to shift systems, structures and processes such that development practice and policy is evidence-led. Discussions on the interface of evaluation/research – policy/practice will highlight the need to move beyond isolated reporting to cultural practices of learning embedded within policy and programming agendas and informed by co-production processes by multiple stakeholders.

Chair: Dr Keren Winterford, Research Director, Institute for Sustainable Futures, University of Technology Sydney

Panelists:

Tom Davis, Director, Diplomatic Academy, Department of Foreign Affairs and Trade

Sophie Jenkins, Strategy and Organisational Performance Associate Director, Caritas Australia

Bethany Davies, Research Program Manager, Portfolio Planning and Impact Evaluation, Australian Centre for International Agricultural Research

Panel 4d – Pre-crisis response: anticipatory action in the Pacific and Timor-Leste

Acton Theatre

Anticipatory action (AA) is redefining the humanitarian sector and creating new opportunities for how humanitarian actors do business. By shifting the focus of response to the pre-crisis space, AA is allowing humanitarians and affected communities to make informed decisions ahead of disaster events – saving time and money; preventing displacement, disease, loss of livelihood; and preserving the dignity of those affected.

AA has been trialed South Asia, Southeast Asia, Latin America and Africa and there is increasing interest in understanding the effectiveness of anticipatory actions in the Pacific and Timor-Leste, identified as one of the world's most disaster-prone regions.

This panel will bring together and showcase the collective efforts of key AA actors in the region. It will combine brief presentations from key humanitarian actors on AA programming underway in the Pacific and Timor-Leste and an expert-led discussion on lessons learned to date, and the challenges, opportunities and priorities facing the sector as these actors test the next big shift in humanitarian action.

Chair: Dave Vosen, Assistant Secretary, Humanitarian Preparedness and Response Branch, Department of Foreign Affairs and Trade

Panelists:

Catherine Jones, Anticipatory Action Lead, Asia-Pacific, Food and Agricultural Organization

Jason Brown, Partnership Director, Australian Humanitarian Partnership Support Unit

Zito Afranio Soares, Australian Humanitarian Partnership Disaster READY Coordinator, World Vision Timor-Leste

* Session will be livestreamed

THURSDAY 7 DECEMBER, 8.30AM

Panel 4e – Development in a rapidly ageing region

Brindabella Theatre

In Asia and the Pacific, one in four people will be over 60 years old by 2050; close to 1.3 billion people. In many countries, such as Viet Nam and China, this transition will happen rapidly, leaving little time to adapt to new demographic profiles. Population ageing impacts every aspect of society, including economics, trade, and health systems.

This panel brings together national and global experts in ageing to explore: why population ageing must be prioritised as a development issue in the Asia-Pacific region; what donors like the Asian Development Bank are doing to foster healthy ageing; and what lessons can be learned from high and lower-middle income countries like Singapore and Viet Nam that can be trialed and replicated in the region.

Chair: Dr Vânia de la Fuente-Núñez, Senior Advisor -Healthy Ageing, Fred Hollows Foundation

Panelists:

Wendy Walker, Director of Human and Social Development Sector Office, Asian Development Bank

Thuy Tran, Country Director, HelpAge International Viet Nam

Dr Paul Ong, Chief Strategy Officer, Tsao Foundation, Singapore

Panel 4f – Leaning in: why the Australian development sector is critical to high-integrity regional carbon markets

Lennox Room

There is a consistent, negative discourse in the media about problematic carbon projects and this creates a sense of distrust and unwillingness to engage. However, Australian development actors are actually uniquely placed to engage in carbon markets through advocacy or implementation. Arguably, we have a responsibility to learn more, and to support our partners in government and communities to benefit from these markets.

The panel will unpack the role that carbon markets can play in mobilising climate finance, starting with the proposition that carbon projects can offer significant benefits to nature, climate, and communities when done right. They will interrogate how high integrity project developers and brokers/sellers of credits should operate, how development actors can be involved and incentivise that behaviour, and how Indo-Pacific governments can mandate that behaviour. They will explore lessons that carbon projects continue to offer for national regulatory settings for countries in the region.

Chair: Georgia Davis, Evaluation and Learning Lead, Nature-Based Solutions, World Wide Fund For Nature (WWF)

Panelists:

Ellis Mackenzie, Senior Consultant, Sustineo

Alex McClean, Chief Operating Officer, Nakau

Dr Sarah Milne, Senior Lecturer, Resources, Environment and Development Group, Crawford School of Public Policy, Australian National University

10.00AM MORNING TEA



Sustineo is a social research consulting firm built on integrity, trusting relationships, and analytical rigour.

But don't just take our word for it. This is a recent client's experience:



The Sustineo team members we've worked with have always been responsive, flexible, and extremely knowledgeable. They deliver quality products, and are driven by a genuine desire to have impact from their work.



International Development Specialists

Healthy, sustainable cities and communities

Across the world SMEC has planned and implemented international development projects that spur inclusive economic growth, support sustainable development and improve livelihoods.

We partner with governments, development agencies and communities to build institutional capacity and add strategic value right across the project life cycle.

Our areas of expertise include physical infrastructure, environmental advisory, social development, climate resilience, program management and governance.

Redefining exceptional

Through our specialist expertise, we're challenging boundaries to deliver advanced infrastructure solutions.

www.smec.com



THURSDAY 7 DECEMBER, 10.30AM

Panel 5a – First Nations’ engagement in the new International Development Policy

*Molonglo Theatre**

For much of our history, the crucial role of Australia’s First Nations in foreign policy and international development program has been overshadowed. 2023 signalled a transformative shift in this narrative. The government took the step of appointing Justin Mohamed as Australia’s inaugural Ambassador for First Nations People. This was closely followed by the launch of the new International Development Policy, which underscores the significance of embedding First Nations Australians’ perspectives into the nation’s international development program. While this policy elevates First Nations to the core of the development agenda, it candidly acknowledges the challenges ahead, necessitating innovative approaches and a recalibration of traditional ways of working.

In response to these shifts, this yarn delves into the policy’s implications for First Nations engagement across the Indo-Pacific and regional partners. It will explore the policy’s potential impact on the international development industry, probe its potential influence on regional partners in the Indo-Pacific, and chart the path forward.

This dialogue represents an opportunity for strategic engagement, where historical legacies inform present-day policies, guiding us towards a more inclusive and collaborative future in international development.

Chair: Renee Cremer, Chief Executive Officer, Young Australians in International Affairs

Panelists:

Darren Godwell, Chief Executive Officer, i2i Global
Jacqui De Lacy, Chief Global Development Officer, Abt Associates

Professor Dave Peebles, Director, Australia Pacific Security College, Australian National University

Alice Tamang, Indigenous Programs Manager, Australian Volunteers Program

Panel 5b – Governance, fragility and conflict: building states, communities and peace

Weston Theatre

What’s wellbeing got to do with state building? Reflections on organisational effectiveness in Australia and the Pacific

Dr Abby McLeod, Director, Ideate (on behalf of Mardi Grundy, International Development Practitioner)

A review of conflict mediation and multi-stakeholder security coordination in Sulu, Philippines

Maria Carmen Fernandez, PhD Candidate, University of Cambridge

Rosemain Abduraji, Executive Director, Tumikang Sama Sama

Community building as state building in Melanesia

Professor Miranda Forsyth, School of Regulation and Global Governance, Australian National University

Dr Sinclair Dinnen, Research Fellow, Department of Pacific Affairs, Australian National University

Balancing development and regulation: the case of Vanuatu citizenship by investment

Henrietta McNeill, PhD Candidate, Department of Pacific Affairs, Australian National University

Chair: Jessica Mackenzie, Chief of Policy and Advocacy, Australian Council for International Development

* Session will be livestreamed

> More panels in this session on following page

CADMUS

Empower
Communities
for Positive and
Long-Lasting
Economic Change

We help our clients achieve extraordinary outcomes, strengthening society and the natural world.

LEARN MORE AT
CADMUSGROUP.COM



SCAN ME

**Creating Impact.
Transforming Lives.
Partnering for a
Better World.**

DT Global is shaping a future where sustainable development and innovation empower individuals, communities, and nations.

We work in partnership with local stakeholders to foster inclusive prosperity, social equity, and environmental stewardship.

Our global team of 2,500 staff and experts work in over 90 countries to solve complex problems in the peacebuilding, governance, economic development, environment, and human development sectors.

With a track record of technical excellence and more than 60 years of international development experience and relationships, we deliver innovative solutions that transform lives.

learn more at
dt-global.com



Panel 5c – Cash transfer and social protection programs: South and Southeast Asia and the Pacific

Barton Theatre

Beyond introductory theory: cash vs in-kind transfers and the Indian Welfare State

Adit Seth, NMIMS, Mumbai [online]

Paving the way for a cashless society and embedded finance: insights from G2P disbursement in Indonesia

Dr Hilman Palaon, Research Fellow – Digital economy, Indo-Pacific Development Centre, Lowy Institute [online]

Local politics and adaptive aid management in less developed regions: lessons from Papua programming

Theodore Weohau, Director – Implementation, Australia Indonesia Partnership Program (SKALA)

Evidence and narratives on social protection in the Pacific and Timor-Leste

Kate Lanyon, Consultant, Sustineo

Ginevra Jarmaine, Program Manager, Partnerships for Social Protection

Chair: Dung Doan, Social Protection Economist, World Bank

Panel 5d – Learning from DFAT's investment performance data

Acton Theatre

DFAT is committed to delivering an effective development program and a performance based culture is key to effectiveness. The new development policy outlines the elements that will improve DFAT's performance culture: Country and Regional Development Partnership Plans, performance indicators, strategic partnerships with global partners, and investment level monitoring and evaluation systems.

A key element of DFAT's investment level M&E systems are its investment monitoring reports. However, recent research highlights that only two in five programs are rated at completion as satisfactory for effectiveness and efficiency.

This research raises two important questions: first, why are ratings so low given DFAT's focus on performance and, second, what can be done to improve performance management and reporting? The three panelists will provide their perspectives on what factors help and hinder DFAT's program performance management and an assessment of the implications.

Chair: Sofia Ericsson, Monitoring and Evaluation Adviser, Department of Foreign Affairs and Trade

Panelists:

Terence Wood, Research Fellow, Development Policy Centre, Australian National University

Farida Fleming, Team Leader, Bluebird Consultants

Adri Darman, Manager, Quality and Risk Unit, Australian Embassy Jakarta

Panel 5e – The localisation agenda: decolonising and shifting power for an equitable future

Brindabella Theatre

Beginning in 2020, the International Planned Parenthood Federation (IPPF), started interrogating its own internal racism and colonial history. This included an anti-racism review followed by focused research into power structures about how coloniality has impacted the sexual and reproductive health sector, examining systemic and structural exclusion, and how silencing and powerlessness affects the everyday realities of people with compounded intersecting marginalities such as the LGBTQI+ community, people living with disabilities, people living with HIV/AIDs and sex workers.

IPPF has now integrated decolonisation and anti-racism as a core pillar of its new organisational strategy, with a commitment that by 2028 IPPF will be recognised as a champion for anti-racism with an intersectional approach to non-discrimination and equity. IPPF will reflect this in the balance of power between global north and south in decision making and resource mobilisation.

Chair: Nihal Said, Senior Technical Advisor, Research and Partnerships, International Planned Parenthood Federation

Panelists:

Julius Ssenabulya, Vanuatu Family Health Organisation

Norma Yeeting, Executive Director, Kiribati Family Health Association

Panel 5f – Climate change: regional and donor perspectives

Lennox Room

Developing a shared knowledge system for climate risks across our region

Dr Tayanah O'Donnell, Partner, Deloitte Climate and Sustainability; Dr Annette Hirsch, Senior Specialist, Deloitte Climate and Sustainability.

Mobilising private investment for adaptation to climate change

Elizabeth Gogoi, Principal Consultant, Oxford Policy Management, India

Assuring the aid is green: establishment of a carbon emissions inventory for Taiwan's Official Development Assistance projects in the Pacific

Regine Liu, Senior Specialist, Research, Development and Evaluation Department, International Cooperation and Development Fund, Taiwan

Chair: Matt Spannagle, Director, Climate and Nature, Palladium

12.00PM LUNCH

1.00PM

Panel 6a – Transforming the regional care economy: policy, delivery and justice

*Molonglo Theatre**

In recent years, ongoing conflicts and crises have spurred the urgent need for action and political will to support a resilient care economy. The COVID-19 pandemic exposed the fragility, inadequacy, and injustice of global childcare, eldercare, and disability care infrastructure.

* Session will be livestreamed

Women's disproportionate share of unpaid care responsibilities increased significantly due to school and daycare closures, heightened eldercare and disability care needs, lockdowns, and other disruptions. This has been exacerbated by more frequent climate emergencies and conflicts.

Despite these widening inequities, the care economy remains underinvested and understudied, particularly among resource-constrained countries.

This session is designed to explore how governments, the private sector, and the civil society are advancing the care economy in their region through diverse approaches. These approaches include the use of: (a) coordinated policy making, (b) blended financing, (c) movement building and advocacy, (d) innovative delivery models, and (e) transforming care norms. Through this discussion, there will be an articulation of the priorities for a global roadmap for action to collectively build resilient care economies.

Chair: Jane Sloane, Senior Director, Women's Empowerment and Gender Equality, The Asia Foundation

Panelists:

Nalini Singh, Executive Director, Fiji Women's Rights Movement

Akshat Singhal, Co-founder and Director, Gender Lab

Susan Nio, Chief Executive Officer, LoveCare



> More panels in this session on following page

Panel 6b – Realising the double-dividend: gender and climate change

Weston Theatre

This session will share a recent research paper ‘Looking Through the Lens of Gender Responsive Alternatives to Climate Change (GRACC)’ and discuss climate finance. The GRACC framework argues that gender-responsive alternative climate change responses can be enhanced by increasing the mutual awareness of scientific and women’s localised knowledge of climate change, by ensuring women’s active participation and leadership in community work, and by fostering women’s collective action that enables integrated responses to interrelated crises.

The research paper demonstrates that bridging the gaps between scientific and women’s localised knowledge helps to achieve positive Disaster Risk Reduction outcomes at the community level.

The session will present these findings, alongside sharing how the GRACC framework has been successfully implemented on the ground in Vanuatu. It will explore opportunities within the new International Development Policy to ensure the mainstreaming of gender equality and climate change realises its full potential, and the chance to reap a double dividend through an integrated focus on both areas including. Panelists will also present insights into how practical and trust-based grant-making approaches can enable a scaling up of targeted funding for gender transformative climate programming using modalities that foster the critical work of women’s rights organisations and feminist movements.

Chair: Sally Henderson, Head of Programs, ActionAid Australia

Panelists:

Dr Joyce Das, Executive Director, Go Equal
Michelle Higelin, Executive Director, ActionAid Australia
Flora Vano, Country Manager, ActionAid Vanuatu

Panel 6c – International NGOs: leadership, effectiveness and trends

Barton Theatre

Navigating an uncertain future through Eco-Leadership

Archie Law, Principal Leadership Advisor, Humanitarian Leadership Academy

The Australian NGO Cooperation Program evaluation: adapting a long-standing modality at a time of rapid global change

Selvi Vikan, Director NGO Programs and Partnerships Section, Global Programs and Partnerships Branch, Department of Foreign Affairs and Trade

Grace Nicholas, Associate Director, Research, Monitoring and Evaluation Practice, Tetra Tech International Development

Latest research from the international development and humanitarian aid sector: an Aotearoa New Zealand perspective

Peter Rudd, Executive Director, Council for International Development, Aotearoa New Zealand [online]

Chair: Ashlee Betteridge, Lead Consultant, Better Things Consulting

Panel 6d – Civic peacebuilding, regional stability, and “Indo-Pacific” pivots

Acton Theatre

This panel explores the effectiveness of current efforts to prevent and resolve conflict at the subnational, national and regional level. The discussion draws from ‘The State of Civic Peacebuilding in South and Southeast Asia’, 2023 – a new paper from The Asia Foundation and the Initiative for Peacebuilding at the University of Melbourne – that highlights the tensions and experiences of civil society peacebuilders, indicating the potential for conflict resolution and the ongoing challenges that frame their daily experiences.

Building from this, the panel will then explore ongoing conflict and related tensions in the region, juxtaposing the experiences of civil

society peace actors in post-coup Myanmar with the recent international focus of Western donors on regional dynamics and “Indo-Pacific” pivots. The discussion will focus on development funding and foreign policy implications, particularly as relates to preventing conflict while encouraging increased aid localisation, supporting regional networks, and promoting the role of women and youth in peacebuilding.

Chair: Dr Adam Burke, Senior Director, Conflict and Fragility, The Asia Foundation

Panelists:

Fanny Coussy, Senior Leader, Humanitarian Advisory Group

Nathan Shea, Assistant Director, Conflict and Fragility, The Asia Foundation

Sophia Htwe, PhD candidate, University of Melbourne

Panel 6e – Locally-led development: insights from humanitarian, development and community programs

Brindabella Theatre

Walking the talk of locally-led humanitarian response: an Australian perspective

Dr Yaseen Ayobi, Lecturer, University of Melbourne

Laura Holbeck, Monitoring, Evaluation and Learning Manager, Australian Humanitarian Partnership Support Unit

Local Insights into social resilience and climate change in Solomon Islands

Dr Darian Naidoo, Economist, World Bank

Dr John Cox, Senior Research Associate, Social and Political Sciences, University of Melbourne

Realising localisation: evolving our thinking and sharing practical insights

Dr Alwyn Chilver, Director Inclusive Growth, Palladium

Angus Towart, Climate Change Adviser, Palladium

Between finance, logistics, and expertise: a grounded appraisal of localisation

Sovit Subedi, Senior Program Officer, The Asia Foundation

Chair: Fiona Tarpey, independent expert on humanitarian policy and governance

Panel 6f – Evaluations and effectiveness: from analysis to action

Lennox Room

A best practice approach to development programming in Melanesia? Connecting citizens to the state and justice sector in Solomon Islands

Dr Colin Wiltshire, Fellow, Department of Pacific Affairs, Australian National University

David Oakeshott, Postdoctoral Fellow, Department of Pacific Affairs, Australian National University

An improved approach to providing technical assistance: a modest proposal

Sam Durland, PhD Candidate, Centre for Continuing Education, Australian National University

Insights into use of research and evaluation for international development: beyond the report

Jessie Meaney-Davis, Research Principal, Institute for Sustainable Futures, University of Technology Sydney

Dr Soytavanh Mienmany, Independent Researcher

Solidarity: what can international development programs do to enhance the solidarity mechanism? And what is a mechanism anyway?

Jo Hall, PhD candidate, Australian National University

Chair: David Kelly, Senior Consultant, Alinea International

2.30PM AFTERNOON TEA

* Session will be livestreamed

3.00PM

2023 MITCHELL ORATION

*Molonglo Theatre**
[Overflow: Weston Theatre and Barton Theatre]

‘Disentangling localisation: an imperative to uphold human dignity’



Dr Esperanza Martinez, Head, Health and Human Security, College of Health and Medicine, Australian National University

Localisation, a term often lost amidst buzzwords and high-level discourse, holds the key to address some of the complex challenges facing the world today. But what does it truly mean and how do we get it right? Drawing from firsthand experience in zones of armed conflict and humanitarian crises, this oration shines a light on the transformative role of human-centric localisation in an uncertain world.

Chair: Professor Russell Gruen, Dean, College of Health and Medicine, Australian National University

*Session will be livestreamed

4.10PM

KEYNOTE PANEL

*Molonglo Theatre**
[Overflow: Weston Theatre and Barton Theatre]

‘The gains and pains of working away from home: Pacific temporary migrant workers in Australia and New Zealand’

This panel shares key findings from the first wave of the Pacific Labour Mobility Survey (PLMS). The PLMS is a new multi-country Pacific migration survey covering workers in three different schemes in Australia and New Zealand, their households in Kiribati, Tonga, and Vanuatu, and non-sending households in each country. It is the first major survey since the introduction of the Pacific Labour Scheme in Australia and a rise in allegations of worker exploitation in both countries.

The survey reveals that most workers are very satisfied, overall and across many specific dimensions, and there has been no meaningful deterioration in workers’ experience during the COVID-19 pandemic and the schemes’ rapid growth. Workers experience wage gains between three and ten times their pre-departure earnings, and a substantial proportion of this is remitted home. A comprehensive assessment of social outcomes reveals that impacts are likely to be net positive.

Chair: Carli Shillito, Assistant Secretary, Pacific Labour Policy and Engagement Branch, Office of the Pacific, Department of Foreign Affairs and Trade

Panelists:

Dr Ryan Edwards, Deputy Head, Development Policy Centre, Australian National University
Dung Doan, Social Protection Economist, World Bank

Closing remarks

Anthea Mulakala, Senior Director, International Development Cooperation, The Asia Foundation

5.10PM

Closing reception

Crawford School courtyard

ABOUT US

DEVELOPMENT POLICY CENTRE

devpolicy.crawford.anu.edu.au/

Development Policy Centre (Devpol) is a think tank for aid and development serving Australia, the region, and the global development community. Devpol undertakes independent research and promotes practical initiatives to improve the effectiveness of Australian aid, to support the development of Papua New Guinea and the Pacific Islands region, and to contribute to better global development policy.

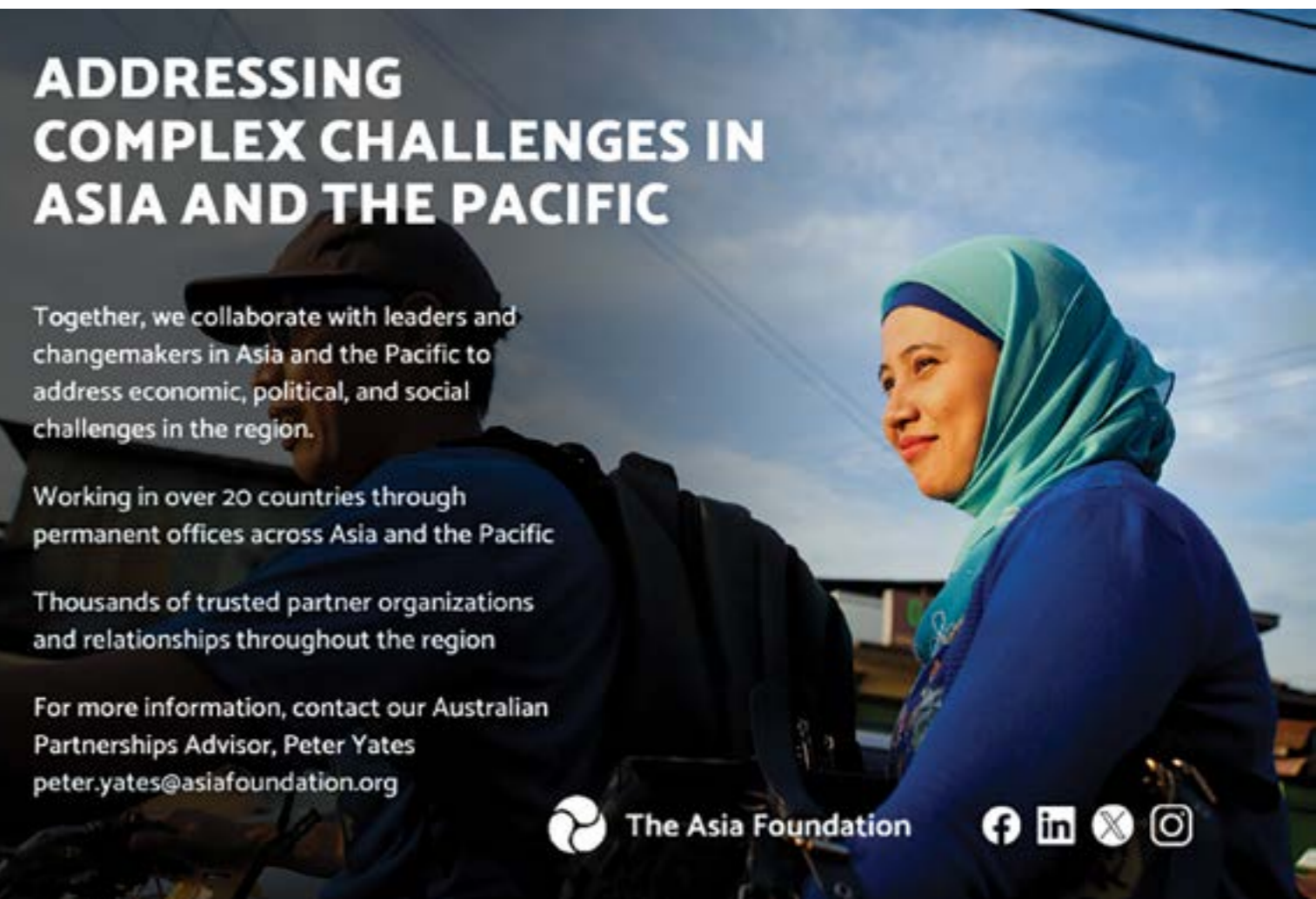
Devpol was established in September 2010 and is based at Crawford School of Public Policy in the College of Asia and the Pacific at the Australian National University.

THE ASIA FOUNDATION

asiafoundation.org/

The Asia Foundation is a nonprofit international development organization committed to improving lives and expanding opportunities across Asia and the Pacific. Informed by seven decades of experience and deep local knowledge, our work is focused on climate action, education and leadership, gender equity, governance, inclusive growth, and international cooperation.

We work in over 20 countries through our permanent offices across Asia and the Pacific, supported by a central office in San Francisco and an office in Washington, DC. Our funding comes from a diverse array of bilateral and multilateral development agencies, foundations, corporations, and individuals.



CONFERENCE SPONSORS

The 2023 Australasian AID Conference is generously supported by our sponsors. Please visit the AAC2023 exhibitors in the Molonglo Theatre foyer to learn more.

ABC INTERNATIONAL DEVELOPMENT

www.abcinternationaldevelopment.net.au

The Australian Broadcasting Corporation is Australia's trusted voice, connecting media and people across the Indo-Pacific region, fostering shared learning and mutual respect.

Its media development unit, ABC International Development (ABCID), draws on the ABC's institutional expertise and local knowledge to train storytellers, share learnings and provide technical, organisational and industry support.

ABCID works across three areas - skills & abilities, content creation & broadcast, and media & communications research.

Sustaining democracy and protecting civic space requires a robust and diverse media sector. With the rise in misinformation, disinformation and censorship, building and strengthening a strong, trusted media sector is more important than ever.

Media operating in the public interest is vital to development. When communities are well-informed, they can make informed decisions, question government policy, and interact effectively with the institutions and systems that shape their realities. Balanced and accurate reporting can inspire positive social change.

The ABC is an outstanding implementation partner for Australia's new International Development Policy. We support local media to listen and reflect the hopes and concerns of their populations across the Indo-Pacific. Our media development work helps to keep communities informed in times of crisis, and develop local media talent and capability. Our work elevates gender equality, contributes to health and education goals, shares Indigenous traditional knowledge and more.

Come and work with us!

ABT ASSOCIATES

www.abtassociates.com.au

Abt Associates is a global consulting and research firm that works with communities, governments, local organisations and businesses to build resilient, enduring approaches to development challenges that work for the peoples they serve.

From mitigating climate impacts and strengthening inclusive health systems to expanding equitable education, Abt combines local insight with international experience to create actionable avenues towards change.

AUSTRALIAN CENTRE FOR INTERNATIONAL AGRICULTURAL RESEARCH

aci-ar.gov.au

As world leaders in agricultural research, Australian scientists are encouraged and supported to use their skills for the benefit of partner countries while at the same time contributing to solutions to meet Australia's own agricultural challenges.

The diversity of our own agriculture sector, which extends from the tropics to the arid zone and to cool temperate continues to thrive while operating in highly variable and challenging climates with minimal external subsidies. This suggests the Australian agricultural sector has valuable knowledge and expertise to share with other countries facing similar challenges, including farmers, rural poor, consumers, researchers and policymakers.

Since 1982, ACIAR has supported research projects in the Indo-Pacific region. Our research projects focus on agribusiness, climate change, crops, fisheries, forestry, horticulture, livestock systems, social systems, soil and land management, and water.

To date, ACIAR has commissioned more than 1,500 research projects in approximately 35 countries, partnering with more than 400 institutions, including 60 Australian research organisations in any one year.

We broker, facilitate, invest in and manage strategic partnerships with public and private research institutions to improve the productivity and sustainability of agricultural systems and the resilience of food systems in partner countries.

CADMUS

cadmusgroup.com

Cadmus is compelled to help solve the world's most challenging problems. Our approach to sustainable development focuses on digital transformation, economic growth and trade, governance, and gender and social inclusion. From our in-house technical teams with extensive field experience to trusted in-region professionals, we assemble outstanding teams of leading experts with an ethos grounded in collaboration and a drive for impact, who work seamlessly across disciplines and leverage transformative technologies to help our clients achieve extraordinary outcomes.

Cadmus recently acquired Nathan Associates, a leading international development company with experience implementing DFAT and other bilateral and multilateral programs worldwide. Cadmus' domain expertise in climate change, environmental compliance, and resilience is complemented by Nathan's more than 75 years of experience delivering practical solutions to complex global challenges and achieving lasting development impact.

Together, we are strengthening society and the natural world.

DT GLOBAL

dt-global.com

Creating Impact. Transforming Lives. Partnering for a Better World.

DT Global is shaping a future where sustainable development and innovation empower individuals, communities, and nations. We work in partnership with local stakeholders to foster inclusive prosperity, social equity, and environmental stewardship. Our global team of 2,500 staff and experts work in over 90 countries to solve complex problems in the peacebuilding, governance, economic development, environment, and human development sectors. With a track record of technical excellence and more than 60 years of international development experience and relationships, we deliver innovative solutions that transform lives.

KONRAD ADENAUER STIFTUNG (AUSTRALIA)

kas.de/australia

The Konrad Adenauer Stiftung (KAS) is a German political foundation, with the vision to promote international dialogue, sustainable development, good governance, capacity building, regional integration and enhance understanding of the key drivers of global developments. It is named after the first Chancellor (Prime Minister) of the Federal Republic of Germany, Konrad Adenauer, who embodied Christian-social, conservative, and liberal traditions. His name represents the democratic rebuilding of Germany, reconciliation with France, the anchoring of German foreign policy in a trans-Atlantic community of values, a vision of European unity and Germany's orientation towards a social market economy.

German political foundations are unique throughout the world. The Konrad Adenauer Stiftung is associated with Germany's Christian Democratic Union (CDU) party. Through its international activities and projects carried out in collaboration with local partners, KAS makes a substantial contribution to international cooperation, ensuring that Germany lives up to its

growing responsibility in the world. Particularly in development policy, the aim of our work is to motivate and enable (young) people to shape their own future by strengthening democracy, the rule of law and promote the principles of a just social market economy. This includes capacity building in the areas of creating sustainable democratic structures, constitutional reform, as well as the support of human rights and peace processes.

SMEC

smec.com/au

International Development Specialists

Healthy, sustainable cities and communities

SMEC is a global engineering, management, and development consultancy, delivering advanced technical solutions for our clients and partners. We partner with governments, development agencies and communities to build institutional capacity and add strategic value right across the project life cycle. Our core markets include Transport, Water, Renewables and Urban infrastructure.

Across the world, SMEC has planned and implemented international development projects that spur inclusive economic growth, support sustainable development, and improve livelihoods. SMEC's International Development expertise spans the following areas:

- Physical Infrastructure
- Economic Governance and Public Sector Reform
- Social development and Climate Resilience
- Program Management: Design, Monitoring and Evaluation
- Environmental and Social Advisory

As part of the Surbana Jurong Group, we have a global workforce of over 16,000 people across more than 40 countries. Guided by our values we are committed to Integrity, Partnership, People, Professionalism and Purpose.

SUSTINEO

sustineo.com.au

Sustineo is an Australian-based, award-winning consultancy committed to fostering positive and sustainable social and economic change through our work. Our multidisciplinary, multinational team excel in designing, developing, and delivering high-quality technical and advisory services including social research, monitoring and evaluation, and program design and implementation. Since our inception in 2010, we have delivered projects in over 20 countries for governments, multilateral banks and donors, non-profit organisations, and commercial enterprises. Our portfolio is multisectoral and includes international development, governance, gender equality, social justice, community resilience, rural development, climate change, and environmental management.

We are committed to research excellence and achieving outcomes that support cross cultural engagement and local capacity building. We are proud of our network of local partners across the region who are essential in shaping our work in-country. Sustineo also has experience in rural and regional Australia, with recent projects delivered for numerous Commonwealth and State Government departments and agencies.

FEEDBACK

We'd love to hear your feedback on the conference in our online survey:

<https://www.surveymonkey.com/r/9QYTHSJ>



IMAGES

Cover photo: Woman by plants on field against sky by Andris Hengki P (Adobe Stock #405036416)

Other images from past conferences (AAC photographer: Alexandra Orme Photography)



Australian
National
University

**DEVELOPMENT
POLICY CENTRE**



The Asia Foundation