



DEVELOPMENT OF A REGIONAL LABOUR MOBILITY STRATEGY

Outline

- Overview and Review Findings
- Objectives
- Regional Context & Linkages to existing work
- Ongoing consultations



Source:
<https://www.palmscheme.gov.au/countries/papua-new-guinea>



Overview and Review findings

- In 2020 Forum Trade Ministers endorsed labour mobility as a standing agenda item and directed the Pacific Island Forum Secretariat to undertake a comprehensive assessment of labour mobility arrangements, including under regional and sub-regional trade agreements, and report back to the next Forum Trade Ministers Meeting.
- In 2021 the comprehensive assessment was conducted looking at existing reports and assessments and completed in 2022. The report has been cleared out of session by Members and has proposed three key recommendations:
 - Regional platform for decision-making on labour mobility and policy support
 - Regional labour mobility strategy and
 - Regional information sharing network
- Forum Leaders in their Special Leaders retreat on 24 February 2023 **tasked** the Secretariat to work with all participating countries to hold further dialogue to better understand challenges, opportunities, and report back to leaders as required, mindful that certain issues can only be resolved at national level.

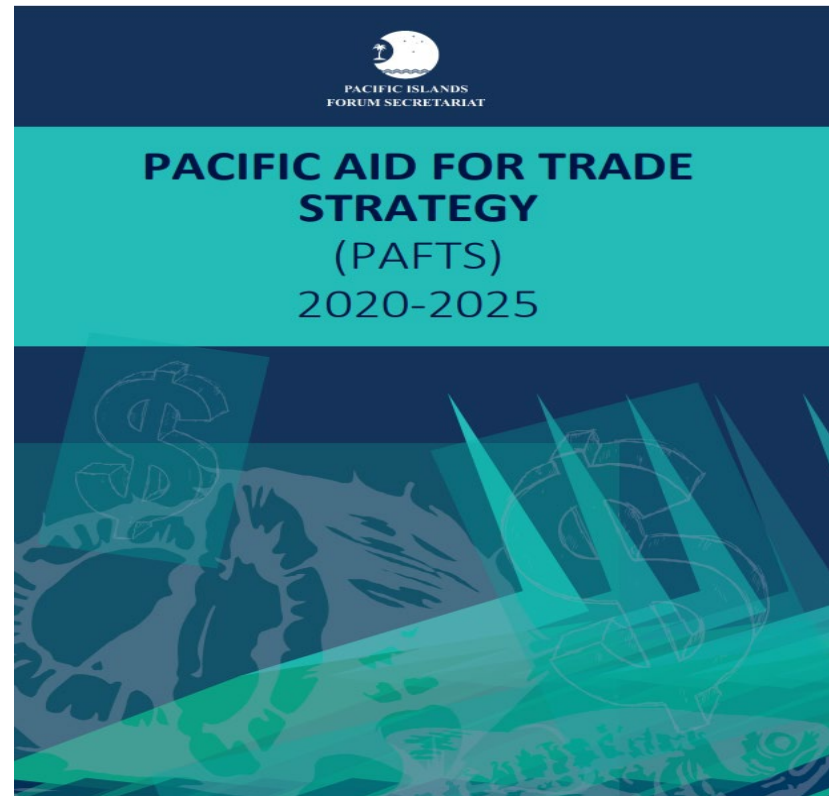


Objective

- i. relevance and importance of developing a regional labour mobility strategy;
- ii. identify priorities that should be reflected in the regional labour mobility strategy, with a focus on short-medium-and long-term objectives (reflecting pathways of the 2050 Strategy);
- iii. recommendations to strengthen the role of PIFS as a political platform and mechanism that will deliver on commitments and priorities under the regional labour mobility strategy; and
- iv. how partners and agencies can support and contribute to the successful implementation of the regional labour mobility strategy.

REGIONAL CONTEXT & LINKAGES

- **Pacific Aid for Trade Strategy 2020 - 2025**
 - i. Deepening Forum Markets
 - ii. Electronic Commerce
 - iii. Comprehensive Connectivity
 - *Pacific Regional Labour Mobility*
 - iv. Services

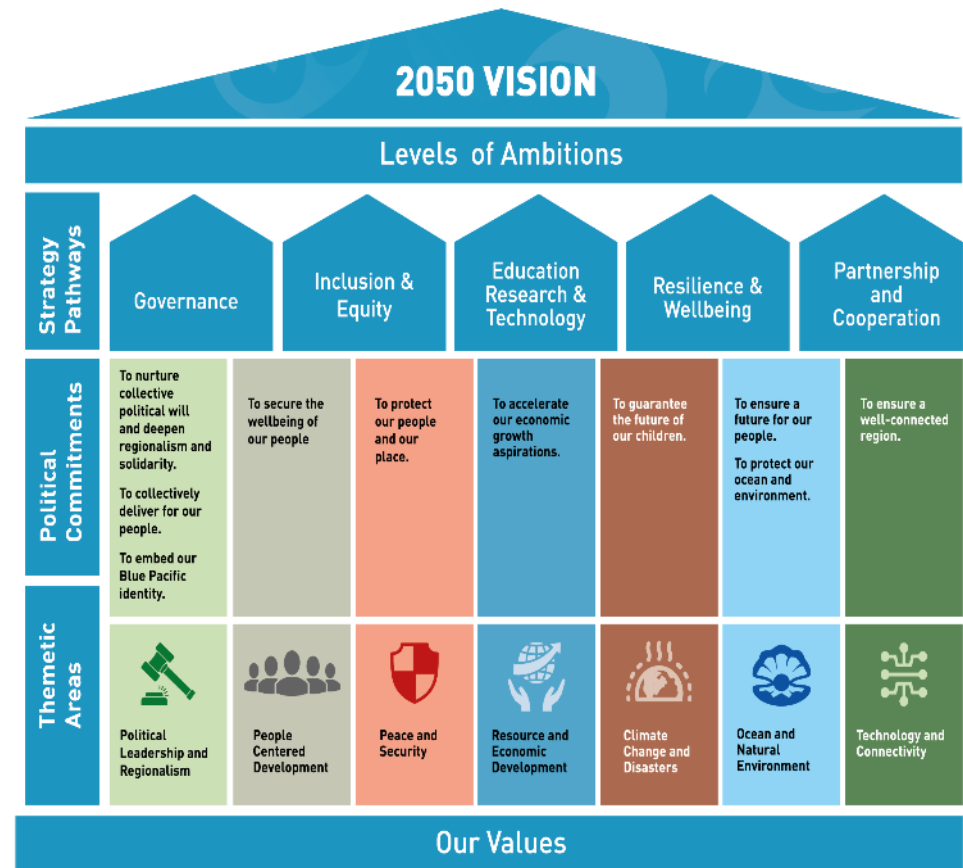


REGIONAL CONTEXT & LINKAGES

2050 Strategy for the Blue Pacific Continent

Thematic Areas

1. Political Leadership and Regionalism
2. People Centered Development
3. Peace and Security
4. Resources and Economic Development
5. Climate Change and Disasters
6. Ocean and Natural Environment
7. Technology and Connectivity





Issues raised during consultations

1. Regional decision-making platform to discuss all aspects of Labour Mobility
2. Development of common standards and recognition of qualifications
3. Guidelines to understand rights and obligations from international treaties and conventions
4. National Labour Policies reviewed or developed
5. Consider a regional intra-Pacific LM arrangements to fill skills shortage
6. Cultural Framework to cater language, culture and customs, religions and others
7. Remittances costs
8. Pension and Taxes
9. Visas
10. Human Rights/ Social Welfare
11. Regional Database of information
12. Coordination with all stakeholders and Strengthening the national LM sending units
13. Training and exchanges of experiences



Partnership approach

1. National Department (s) of Labour
2. Partnership with IOM and ILO
3. PACER+ Implementation Unit
4. APTC
5. Others



**Thank you
Vinaka**