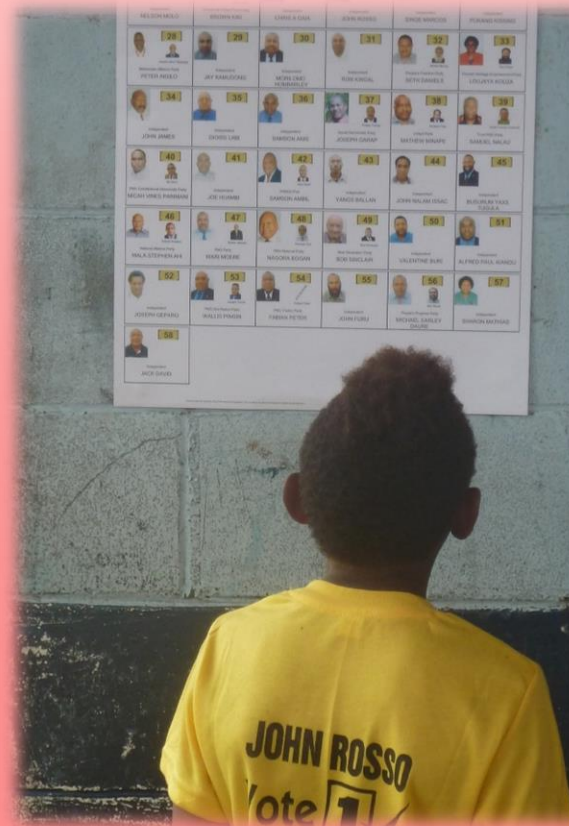


PNG 2022 – the big questions



Terence Wood – the Development Policy Centre
terence.wood@anu.edu.au

Acknowledgements

- Place
- Fellow researchers
- Voters and electoral officials in PNG



Today

1. What we already know.
2. Re-election patterns
3. The party mystery
4. The political/electoral interface
5. What will happen next (PNG edition)
6. What will happen next (External edition)
7. What will happen next (Final edition)



What we already know

1. Electoral quality varied around country
2. Gendered election
3. Preparation was inadequate
4. The roll was awful (everywhere)
5. Many places plagued with problems
6. Violence bad: Highlands, Moresby, Morobe
7. One failed electorate, others should be
8. Petitions for years to come.

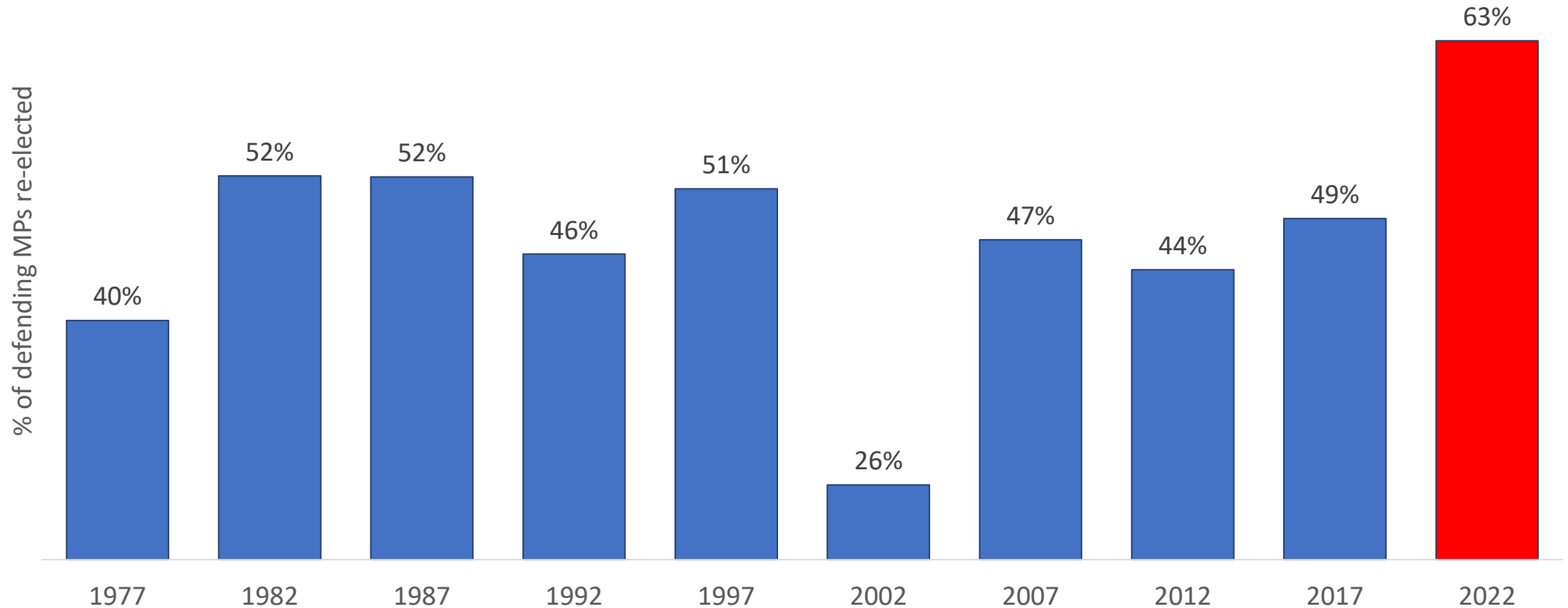
...we'll learn more TIPNG, DPA, full election results data.



And the questions are...

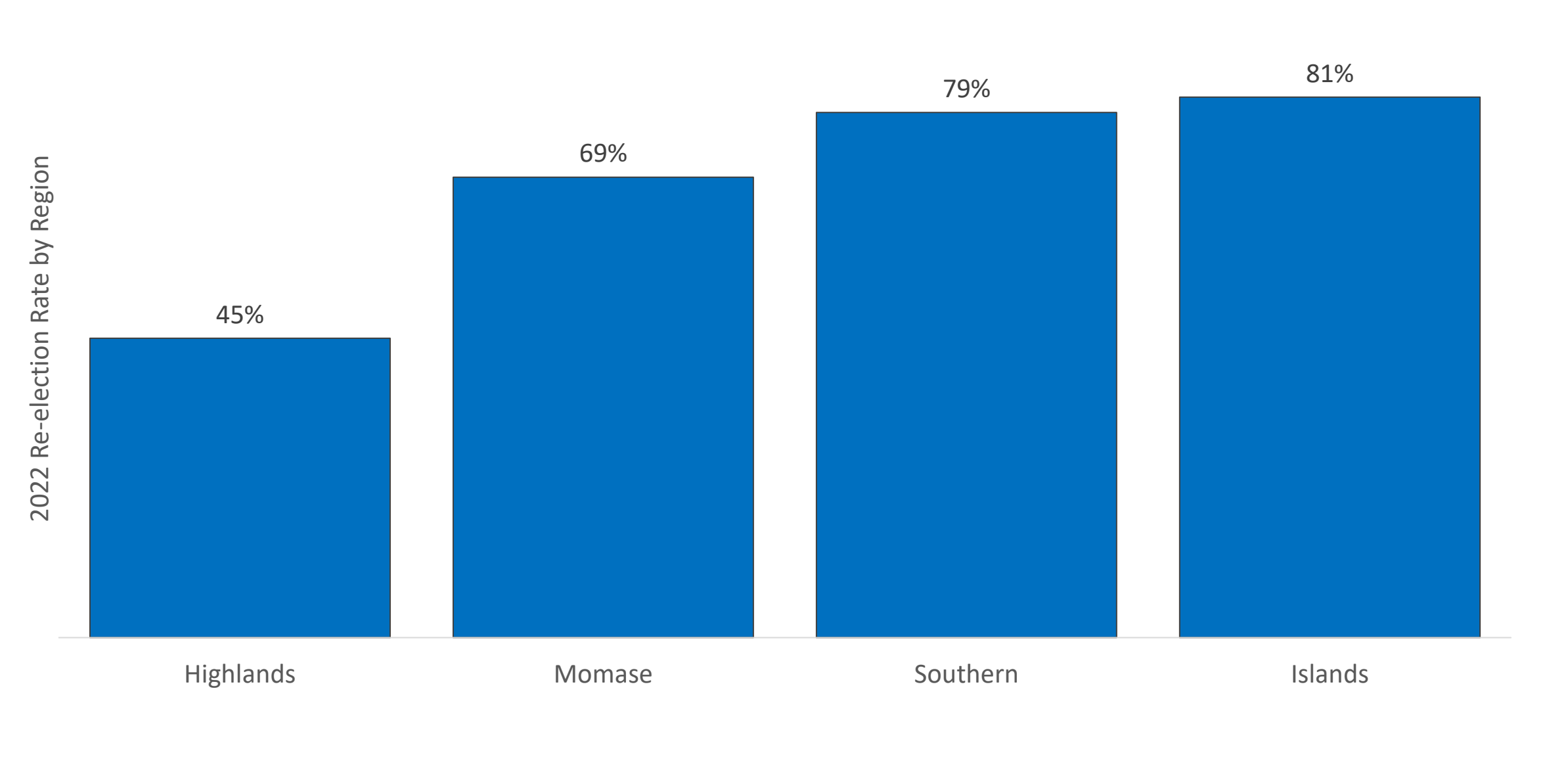


What happened to re-election rates?!?

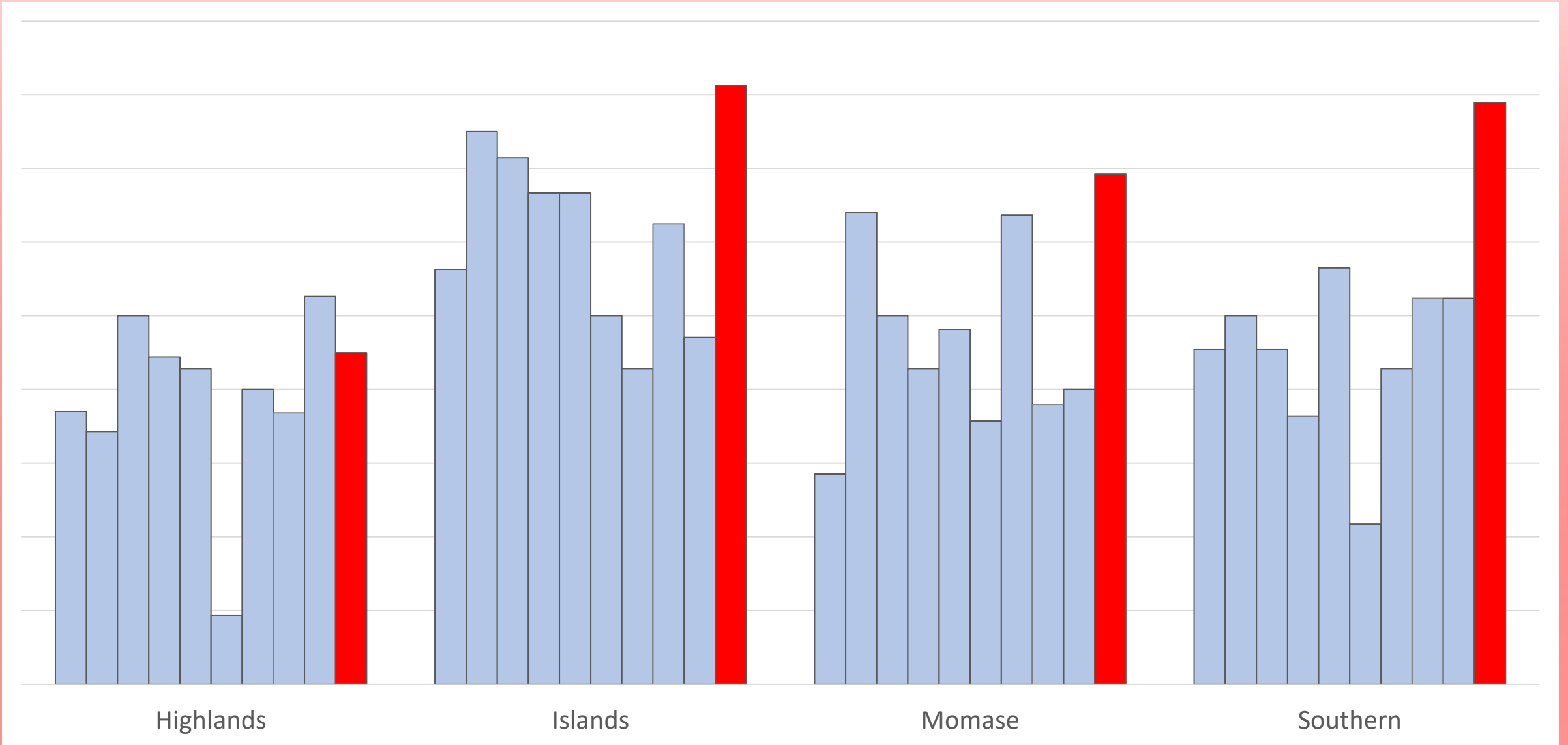


Electoral fraud???

Re-election rates were lowest in Highlands



In re-election sense just another election in the Highlands



Other explanations?

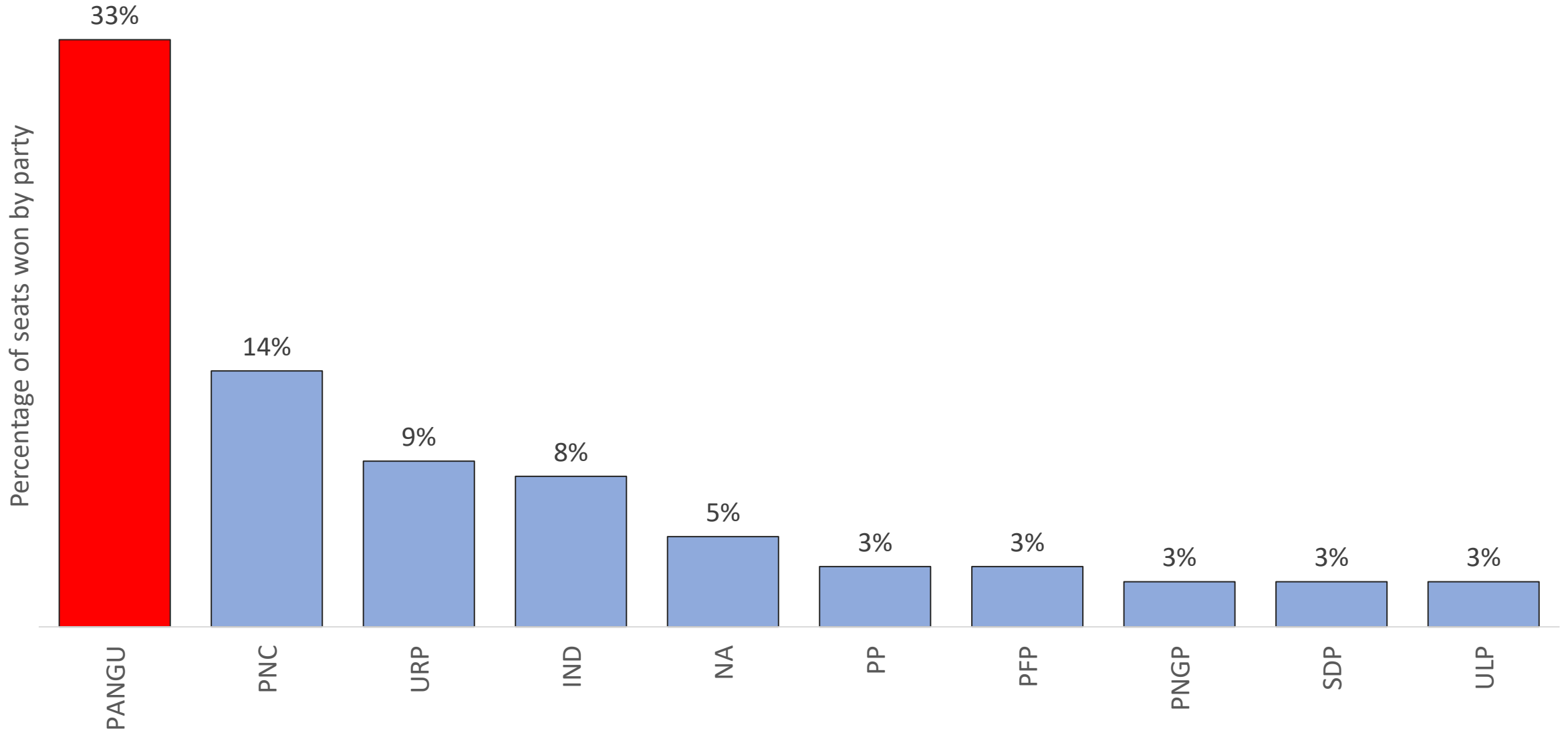
DSIP like Solomon Islands? But DSIP hasn't increased that much, and little evidence that at current levels it works.

For now the incumbent re-election rate remains a puzzle.

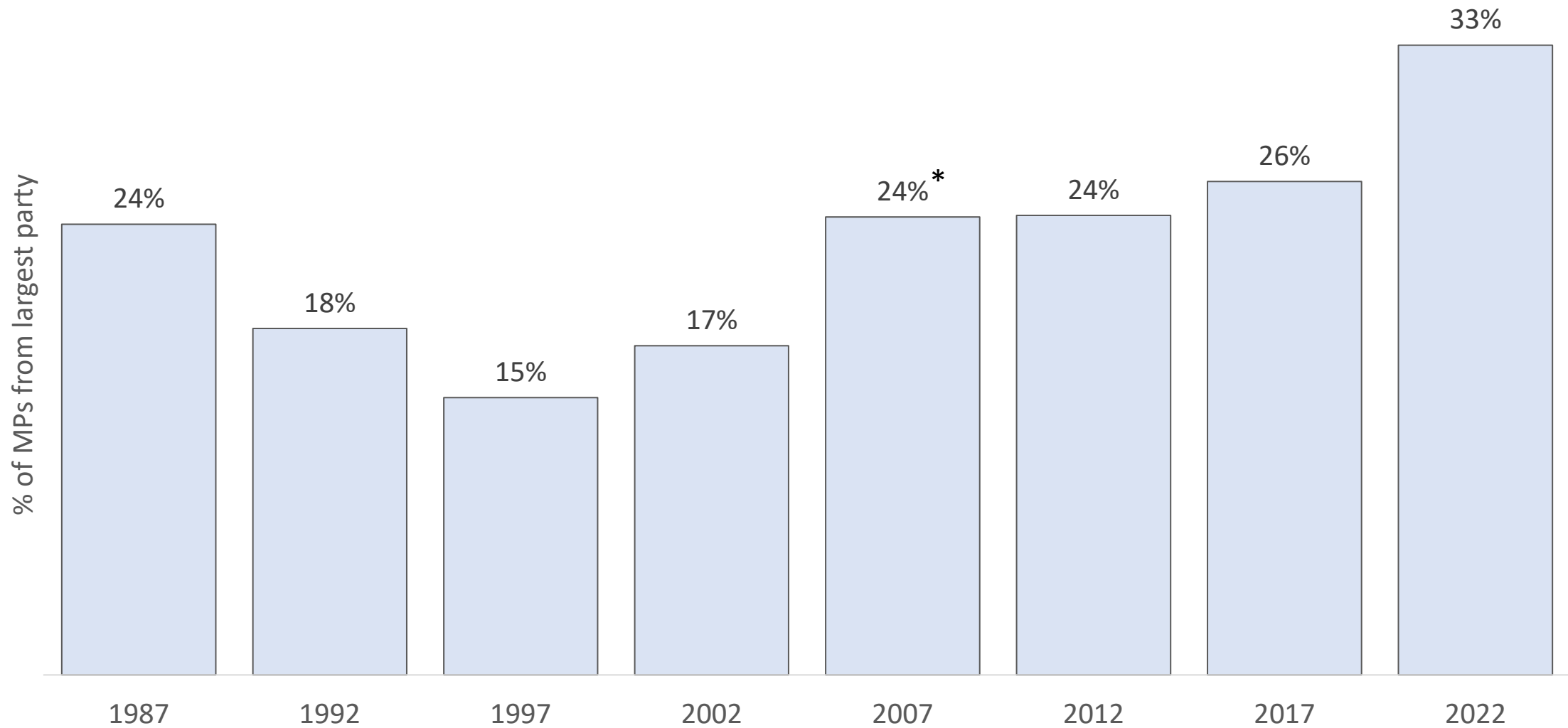
We will know more once we get good election data (not to mention a census).

For now, it remains a big question, possibly one which suggests something worrying is going on, but let's not leap to conclusions yet.

The party mystery (why did PANGU smash it?)



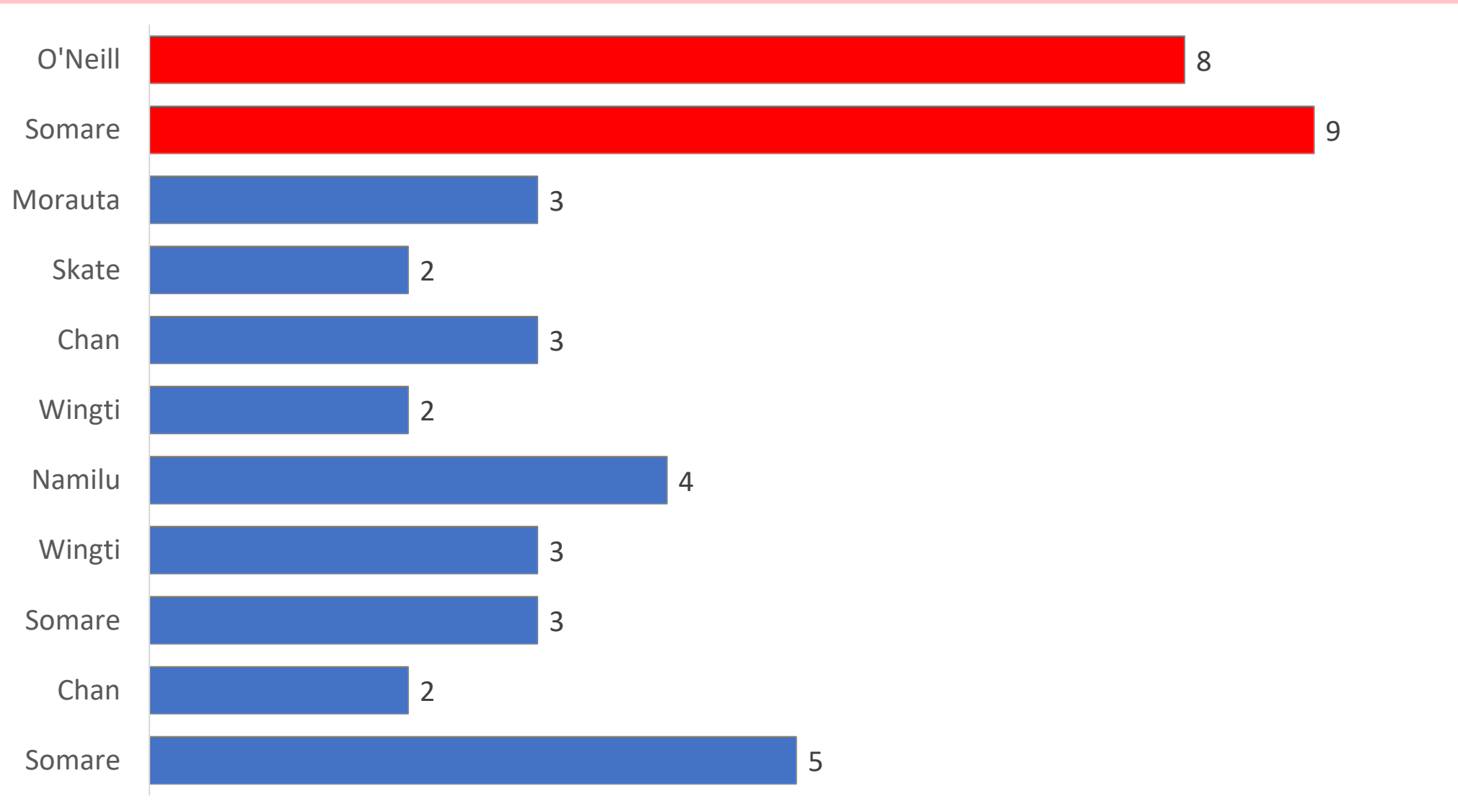
The Party Mystery



* some data missing in 2007

What is emerging from the political electoral interface?

New Era of Prime Ministerial Longevity



Hard to remove PM during term



5 year (60 month) electoral term)

Please note the original slide in this presentation had the wrong duration for the length of the grace and no confidence periods. This information has been corrected in this slide now.

Elections become very important for aspiring Prime Ministers (party size)

Largest party first shot at forming government (OLIPPAC).

This is the cause of the upward trend in largest party size.

Powerful parties target powerful candidates.

- Contributes to money politics and vote buying.
- Incentivises other types of electoral malpractice (but no evidence of it occurring)



Elections become very important for aspiring Prime Ministers (haste!)

Big advantage if elected quickly. Can get to POM to meet new MPs & lure them to your camp.

So you want to win on first preferences.

And you want to be polled early (which electorate was first this time?)

Need to win on first preferences incentivises cheating.

Polled early favours Highlands.

Will powerful politicians from other places accept that often their post-election PM from the Highlands?



What now (PNG edition)?

After 2002 election things got better.

Elections can improve in PNG.

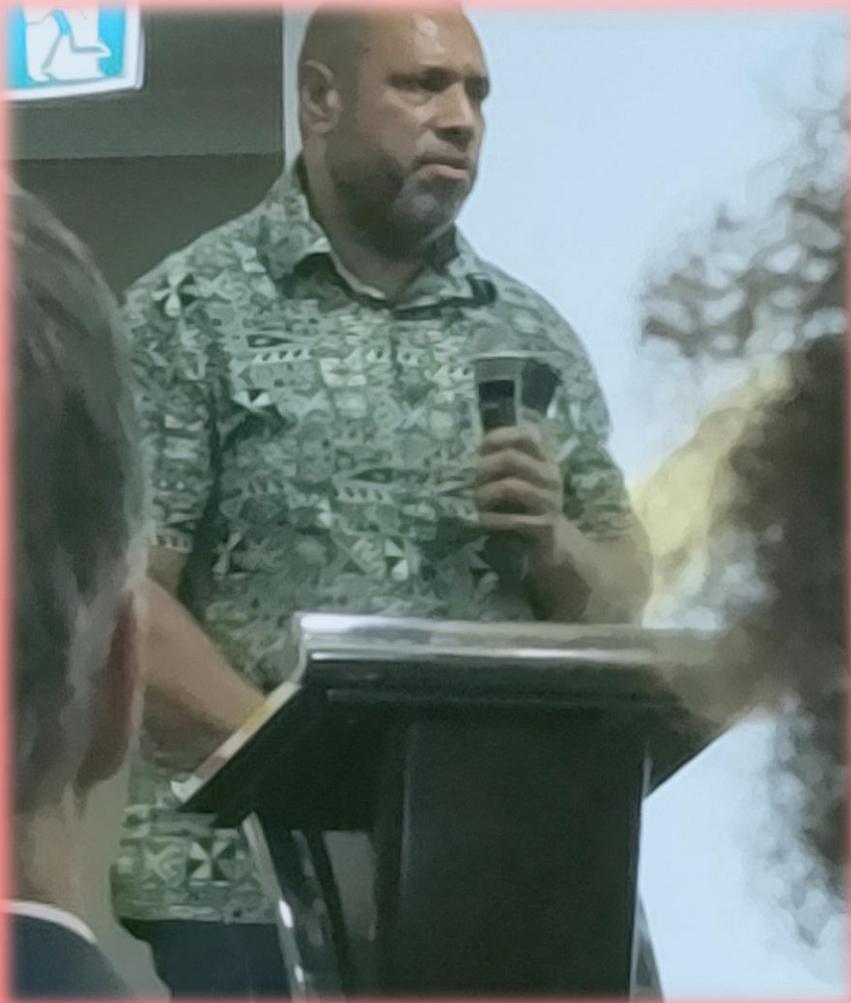
But needs political will!

- next elections 5 years away
- money short
- (most) MPs typically don't care about electoral quality

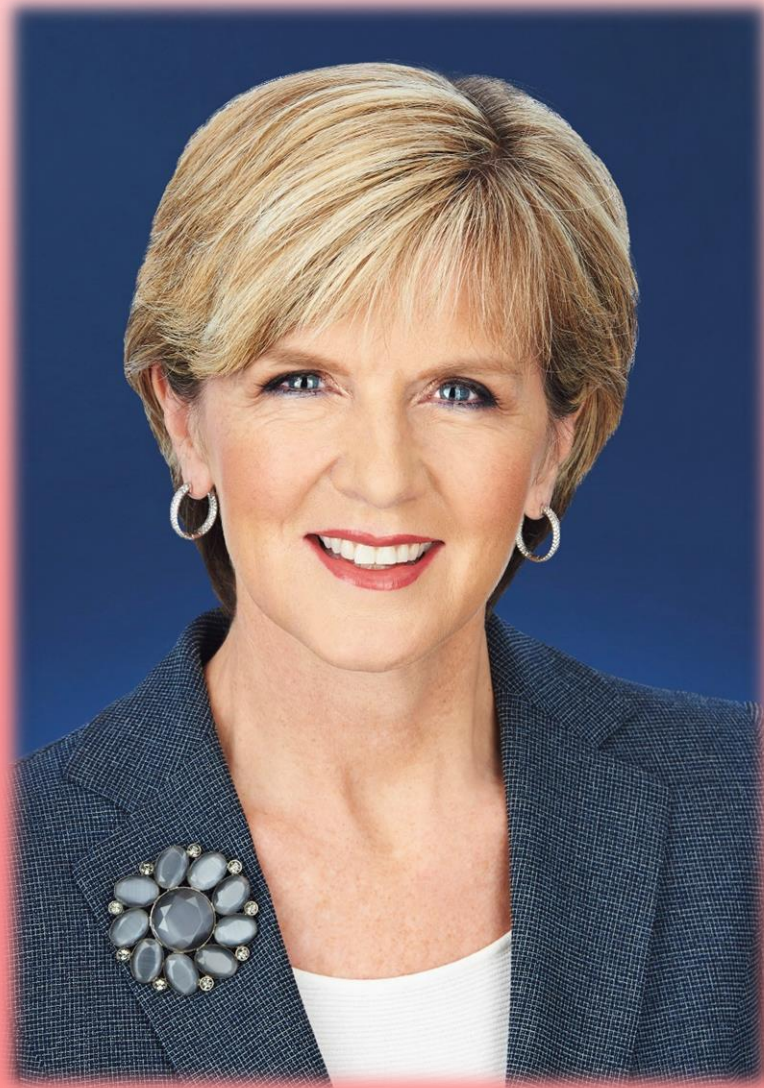
Allan Bird appointed by Marape to head electoral review committee with head of IDEC & others.

Hopeful sign.

Good ideas/bad ideas.



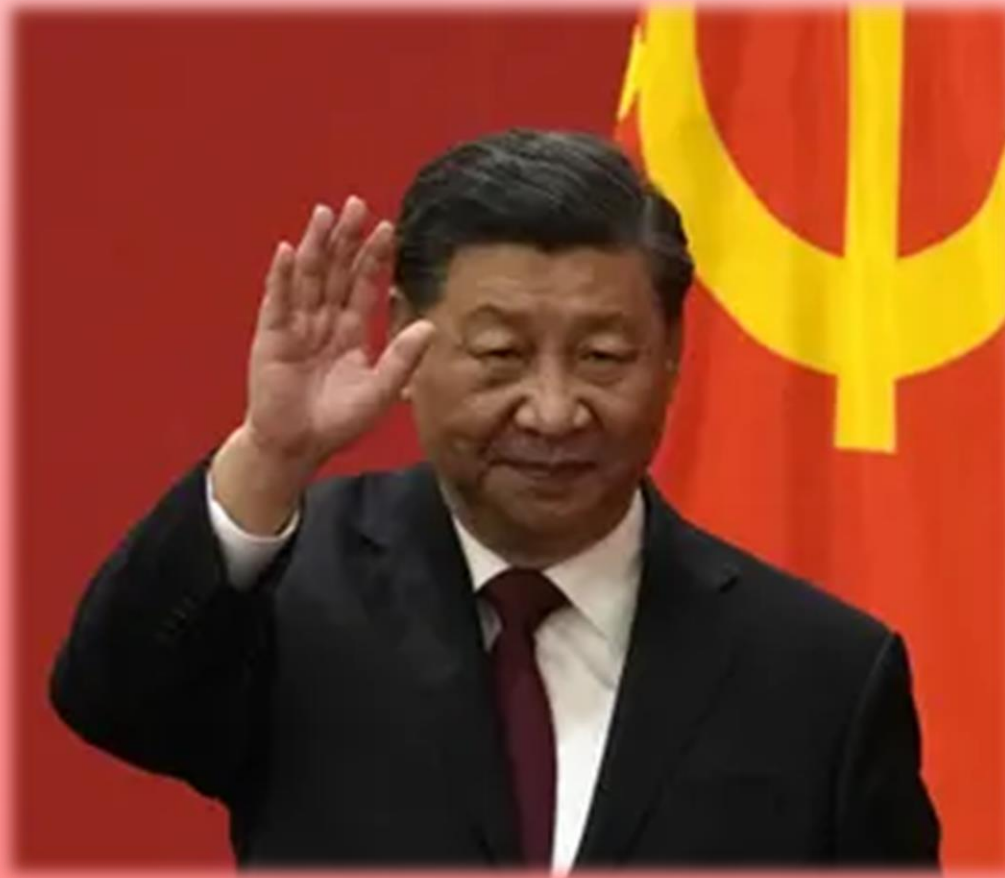
What now (Australia edition)?



What now (Australia edition)?



What now (Australia edition)?



What now (Australia edition)?

1. Can't rely on the hope senior PNG politicians will act on own.
2. Australia is PNG's biggest donor.
3. Pays for about 10% of (non-security) electoral costs in PNG.
4. Could spend more though.
5. Can't just think of PNG through a New Cold War lens.
6. Its politicians need to engage (respectfully) on electoral matters.
7. Aid program needs to be given resources and direction to engage fully.
8. This means the roll (amongst other).
9. Constructive engagement and resourcing
10. It won't be easy, but it is essential to try.

What now (final edition)?

What is the future of Papua New Guinea's electoral democracy?

Worse – strongmen?

Worse – breakdown?

More of the same?

Improvement?



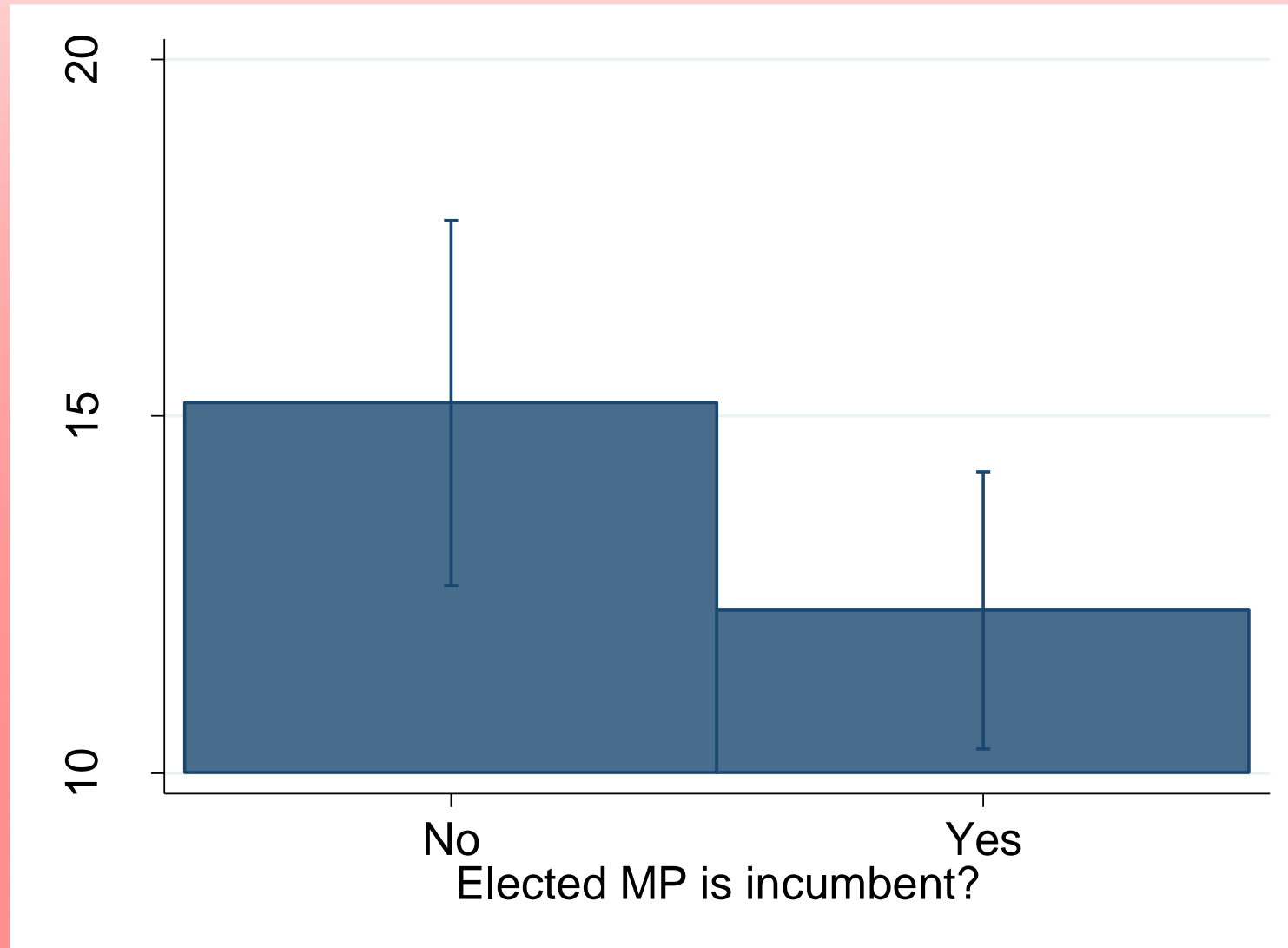
Questions?



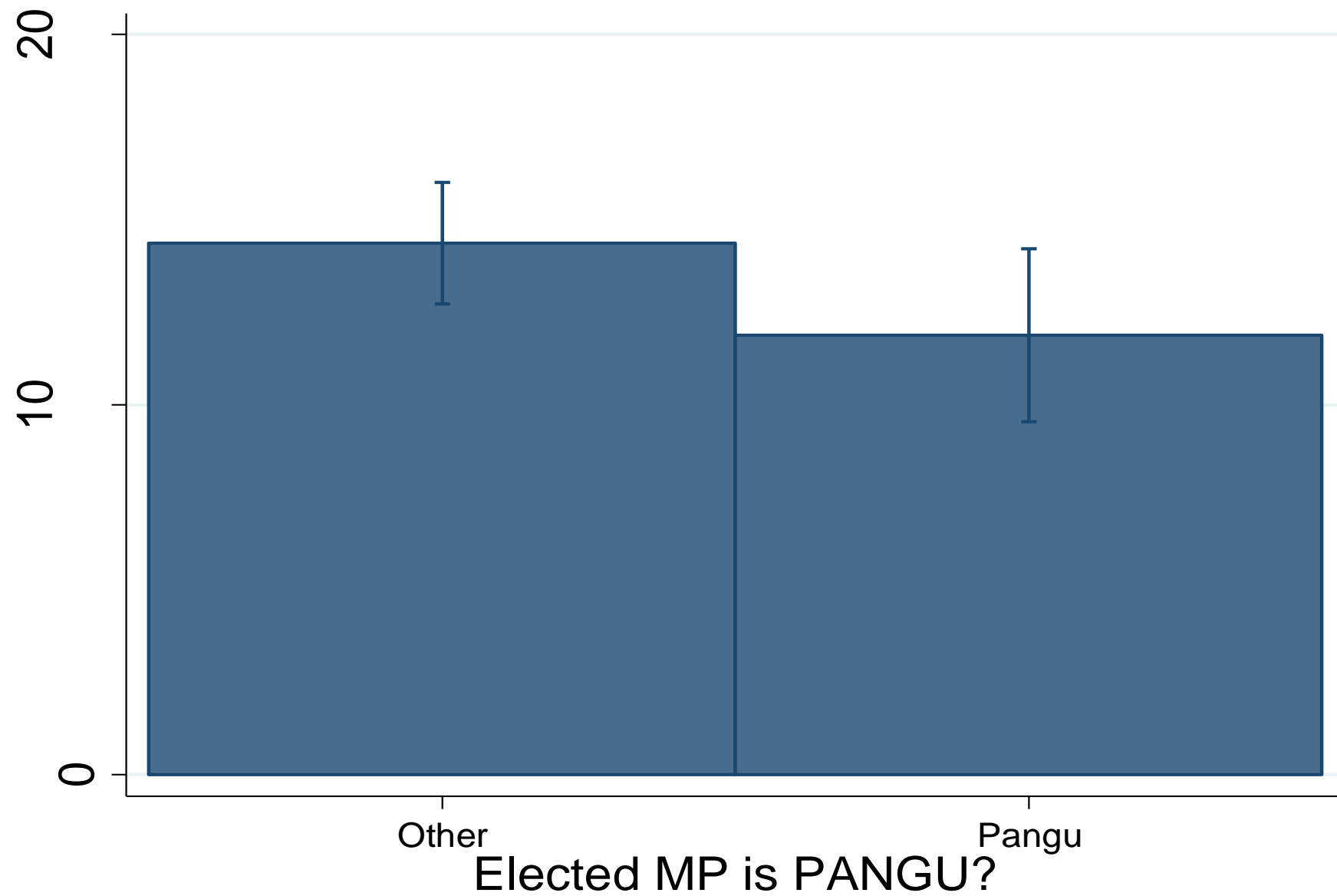
terence.wood@anu.edu.au

Appendices

Results were declared sooner for incumbents than new MPs ?!?



Suspicious, but could be incumbents are stronger



P=0.9, n=117, with region FE. But ceases to be statistically significant with incumbent control added.